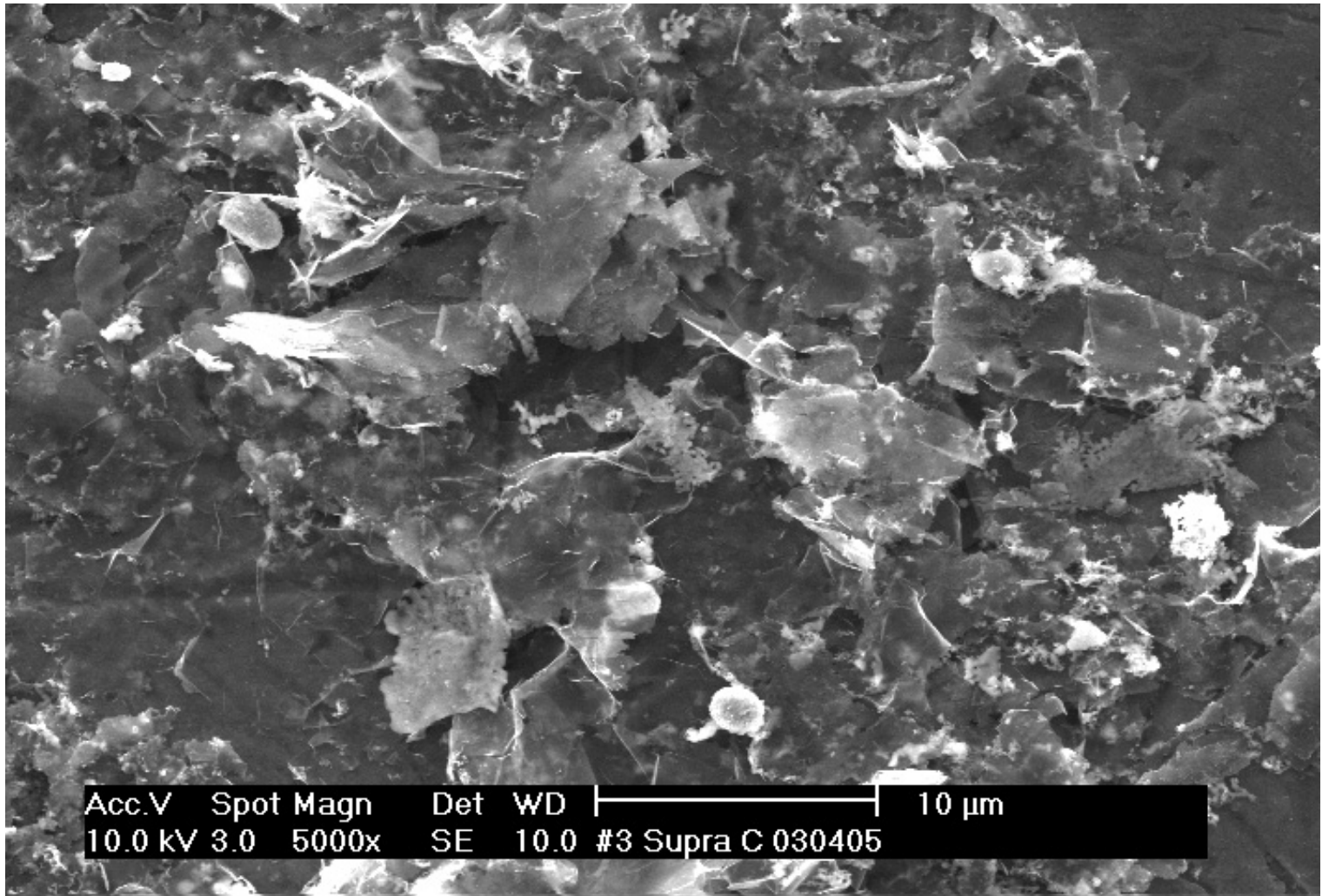
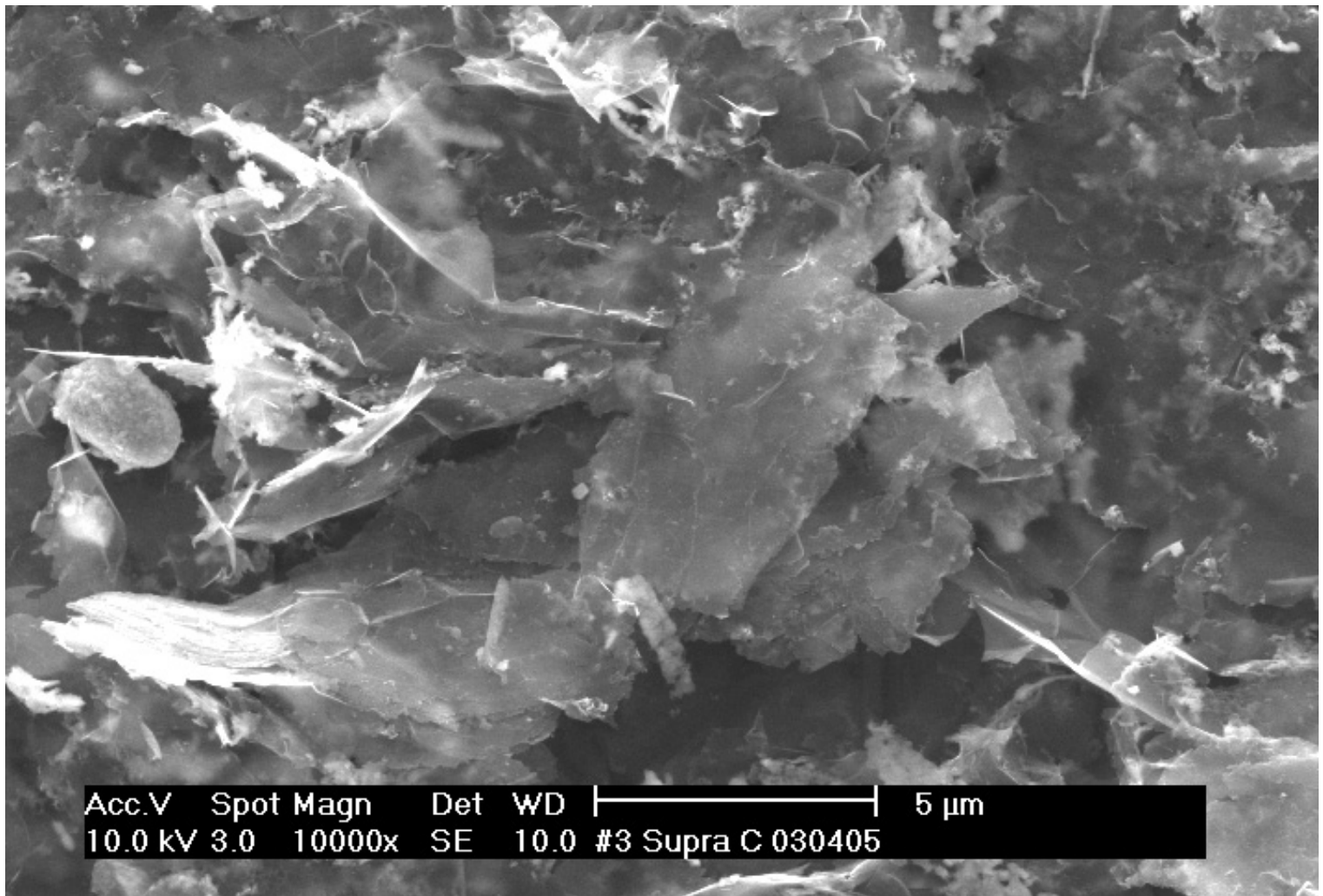


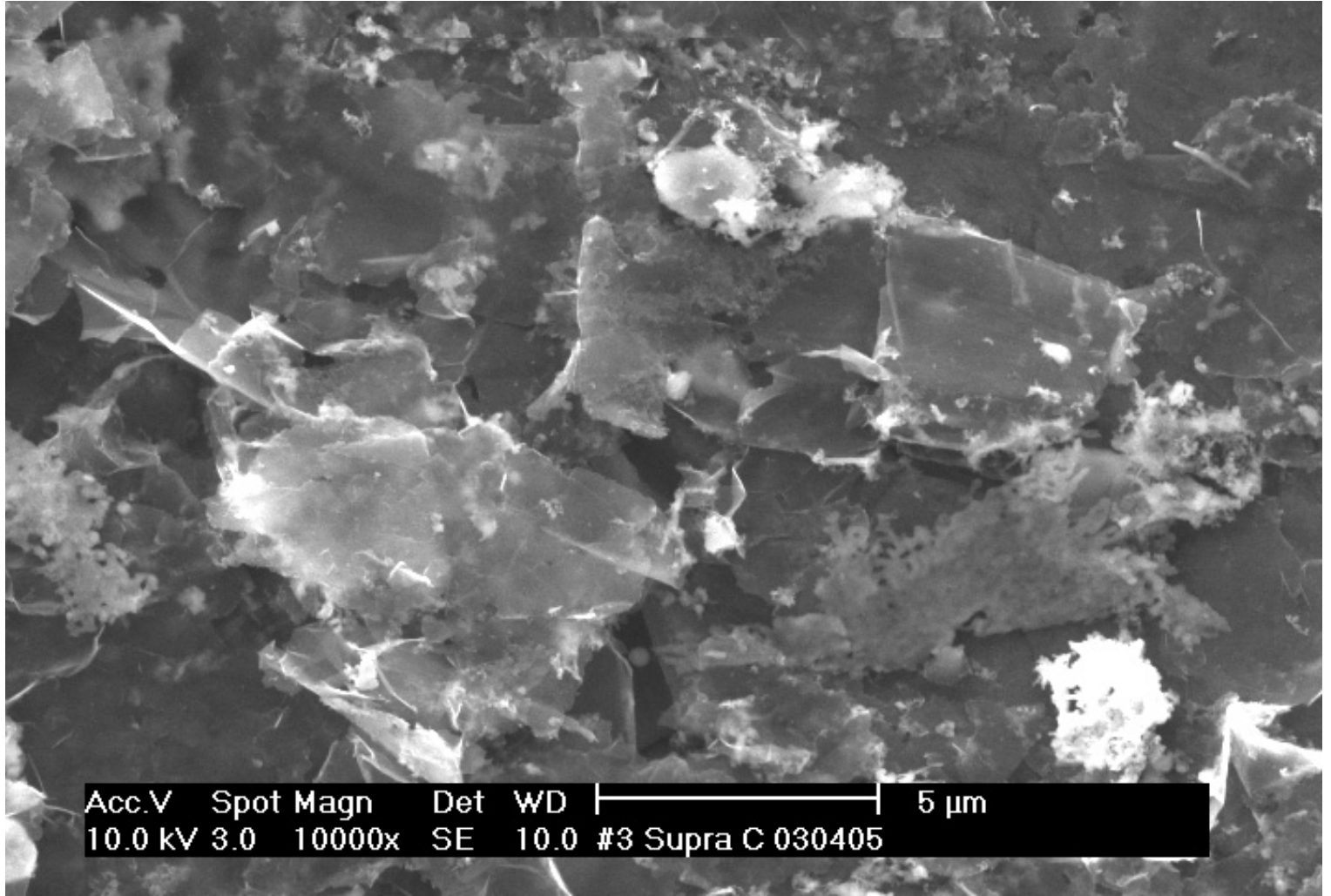
Acc.V 10.0 kV Spot 3.0 Magn 3000x Det SE WD 10.0 | 20 μm #3 Supra C 030405

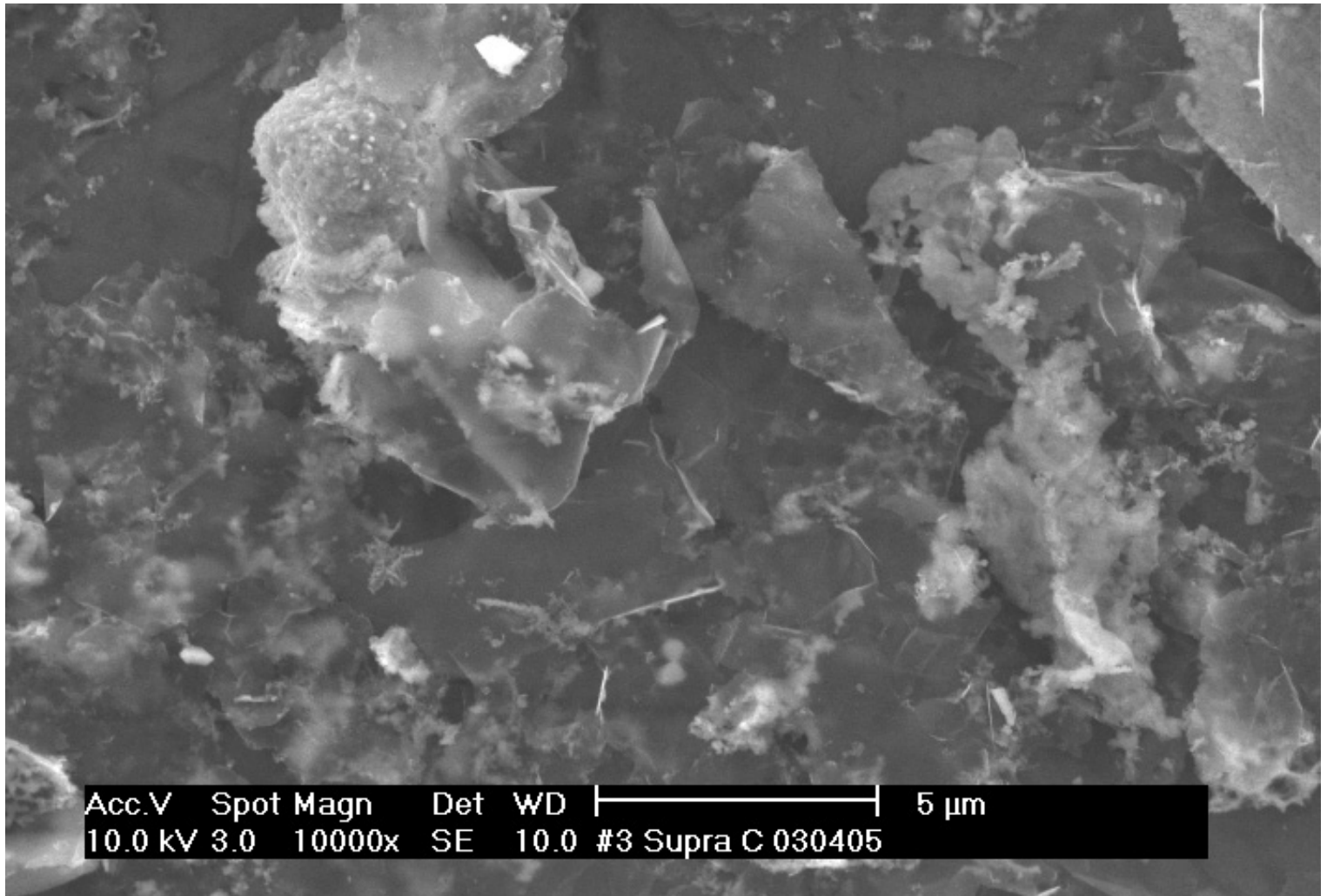


Acc.V	Spot	Magn	Det	WD	10 μm
10.0 kV	3.0	5000x	SE	10.0 #3 Supra C 030405	

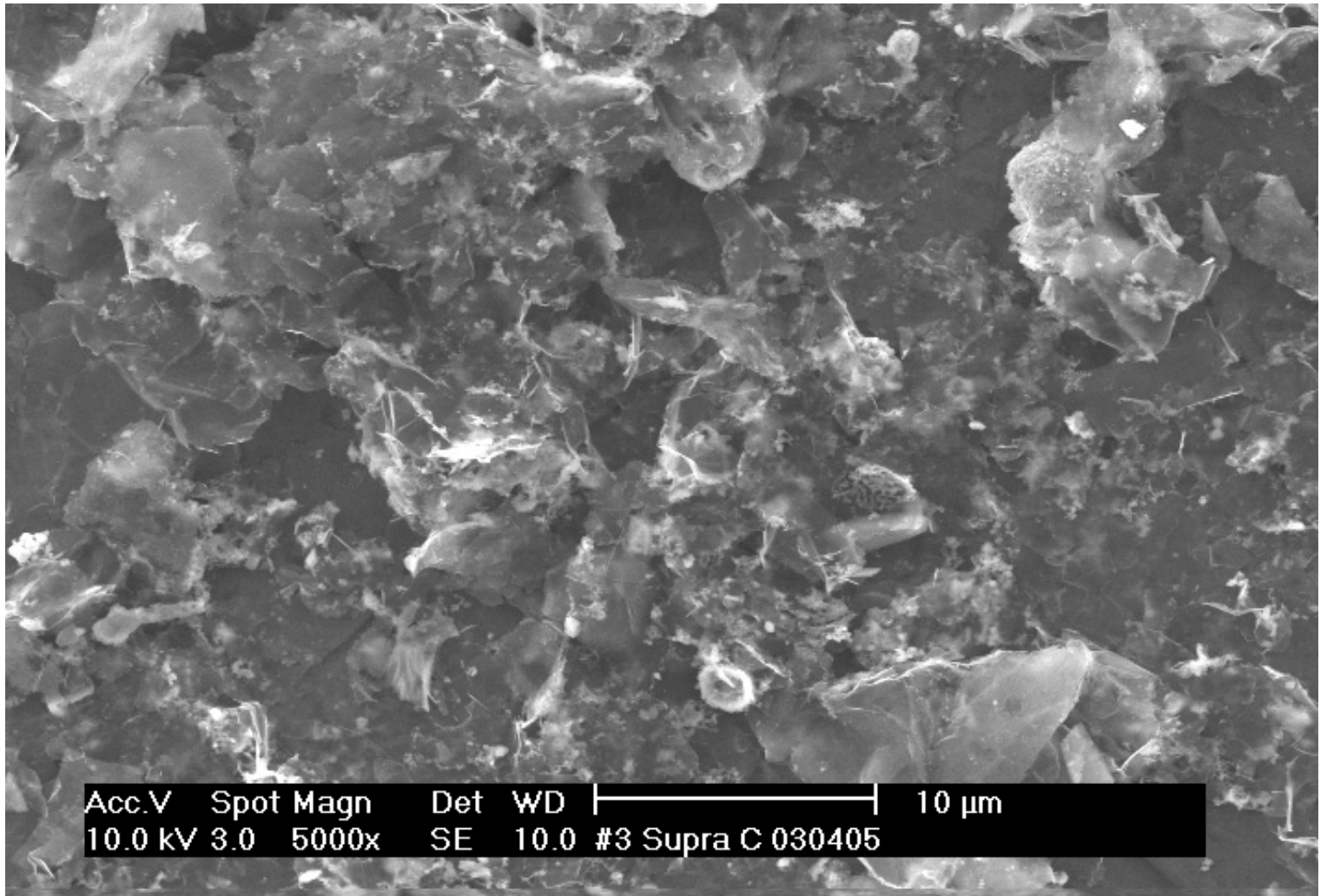


Acc.V Spot Magn Det WD |-----| 5 μm
10.0 kV 3.0 10000x SE 10.0 #3 Supra C 030405

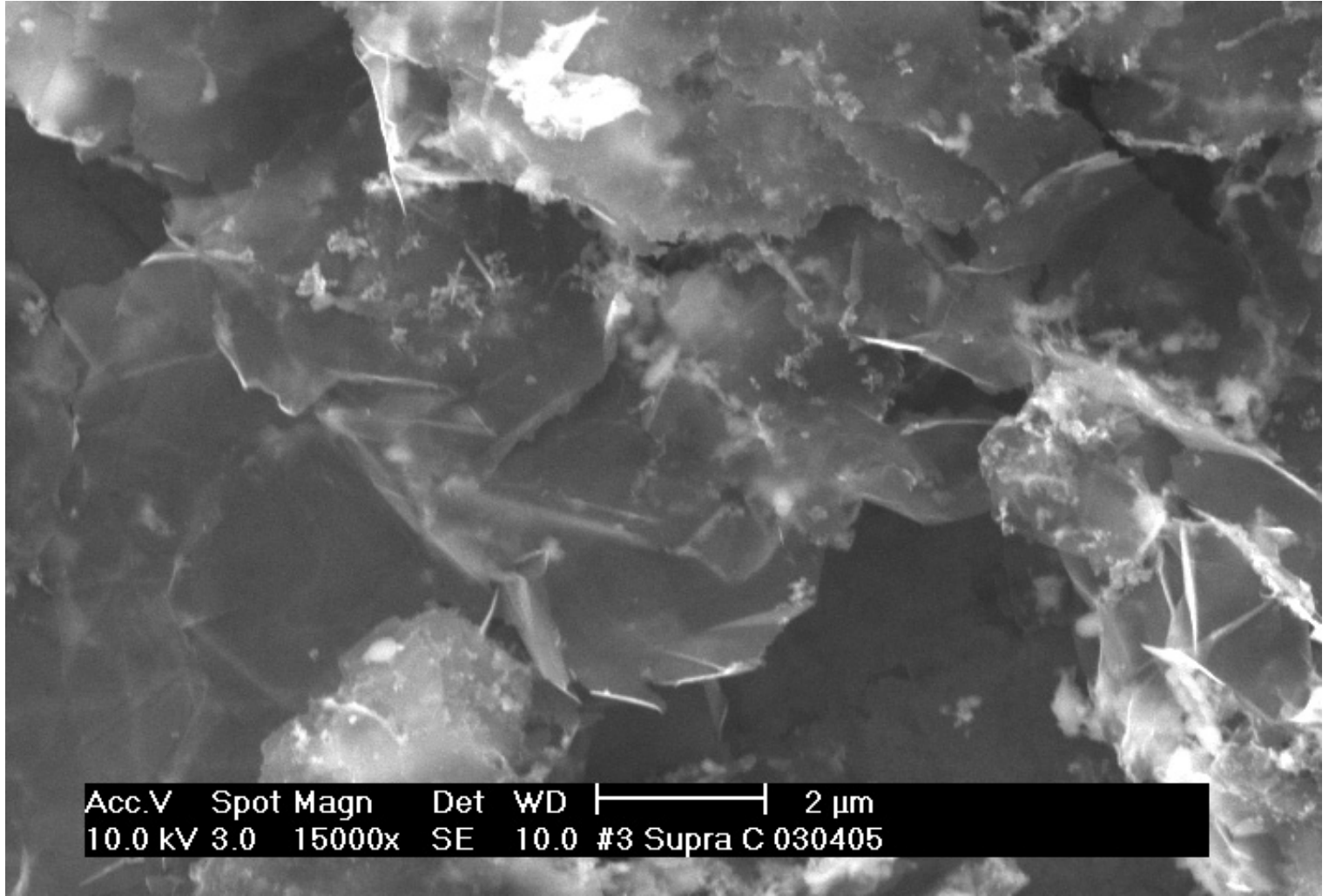




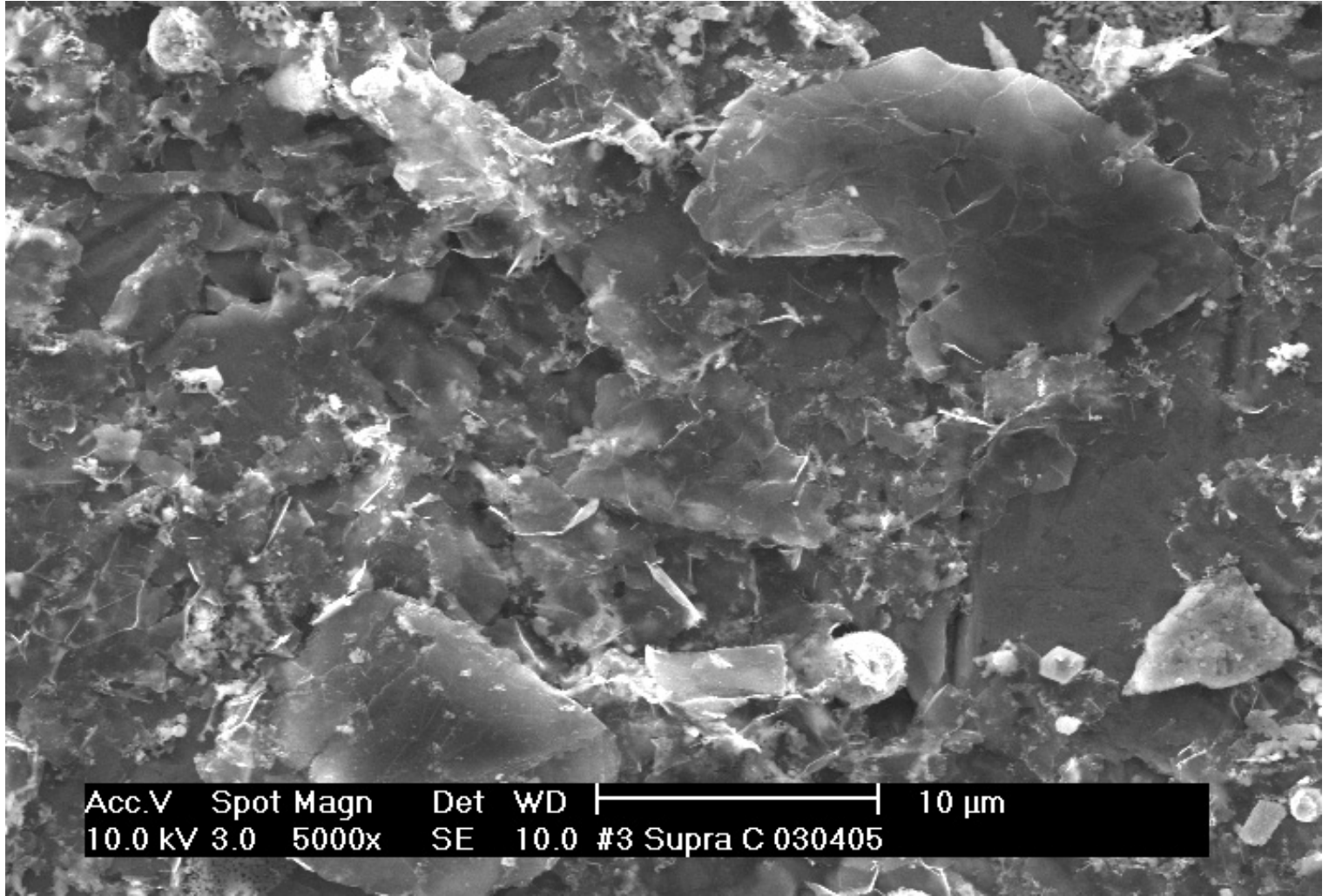
Acc.V Spot Magn Det WD |-----| 5 μm
10.0 kV 3.0 10000x SE 10.0 #3 Supra C 030405



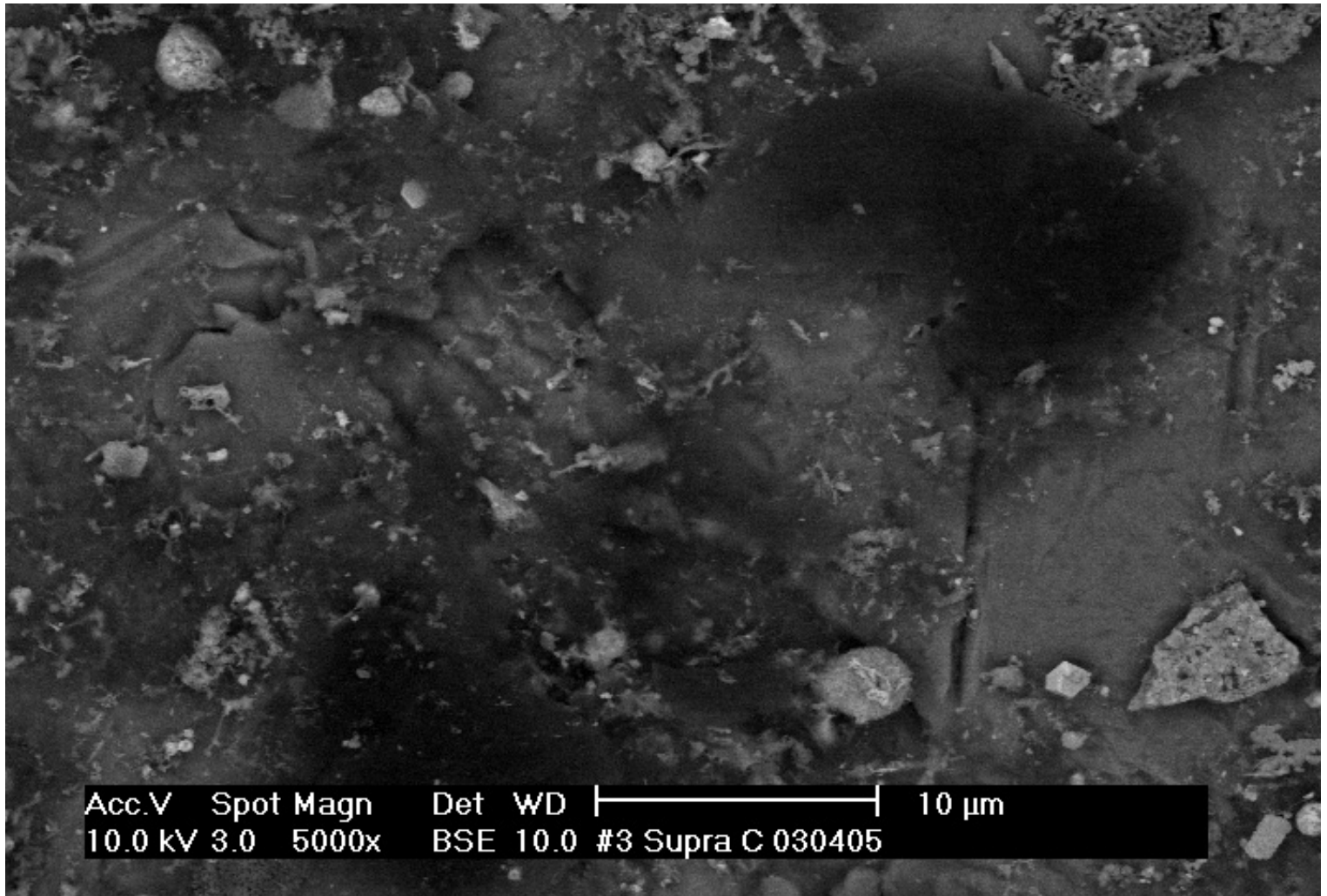
Acc.V 10.0 kV Spot 3.0 Magn 5000x Det SE WD 10.0 #3 Supra C 030405 10 μm



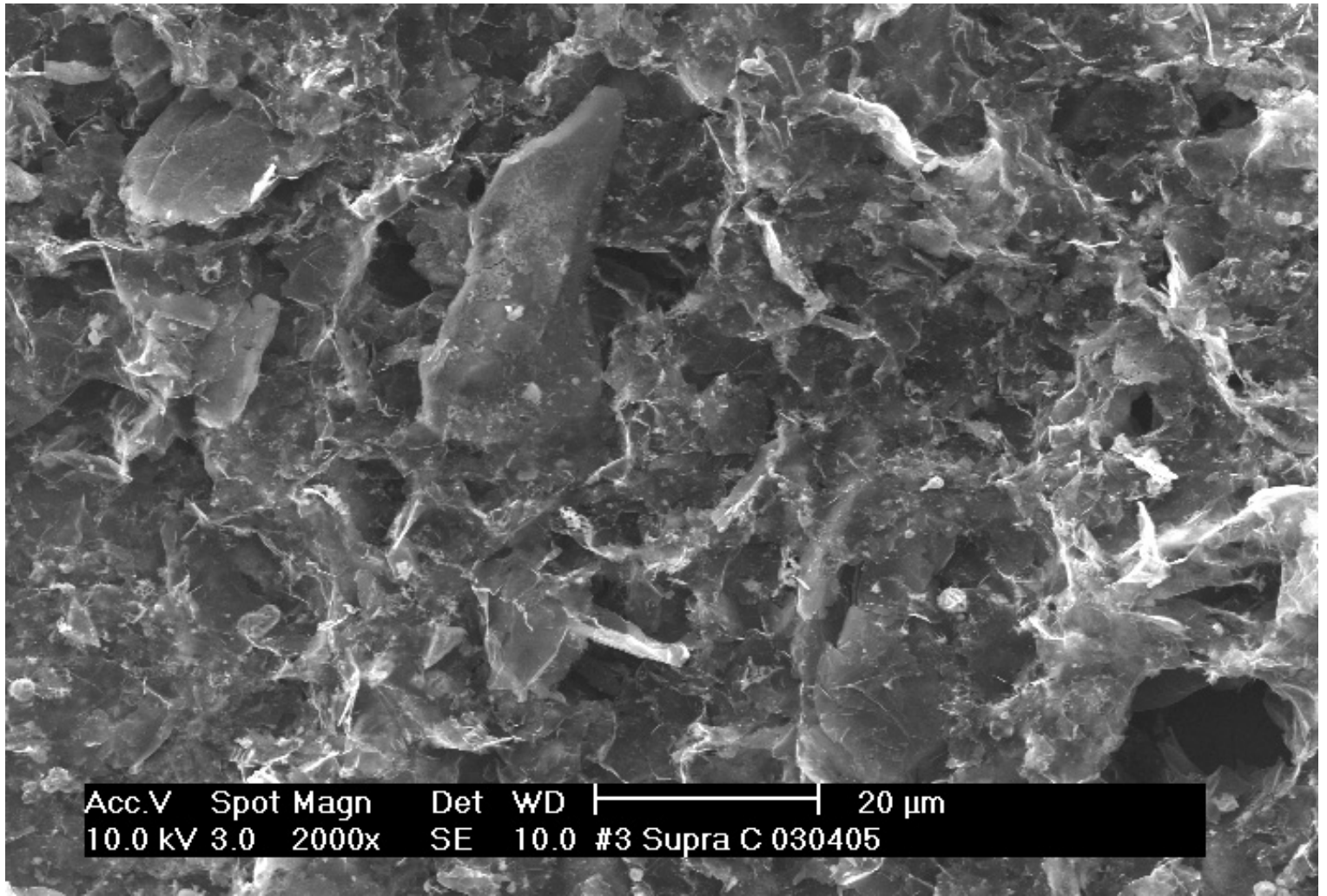
Acc.V Spot Magn Det WD |-----| 2 μm
10.0 kV 3.0 15000x SE 10.0 #3 Supra C 030405



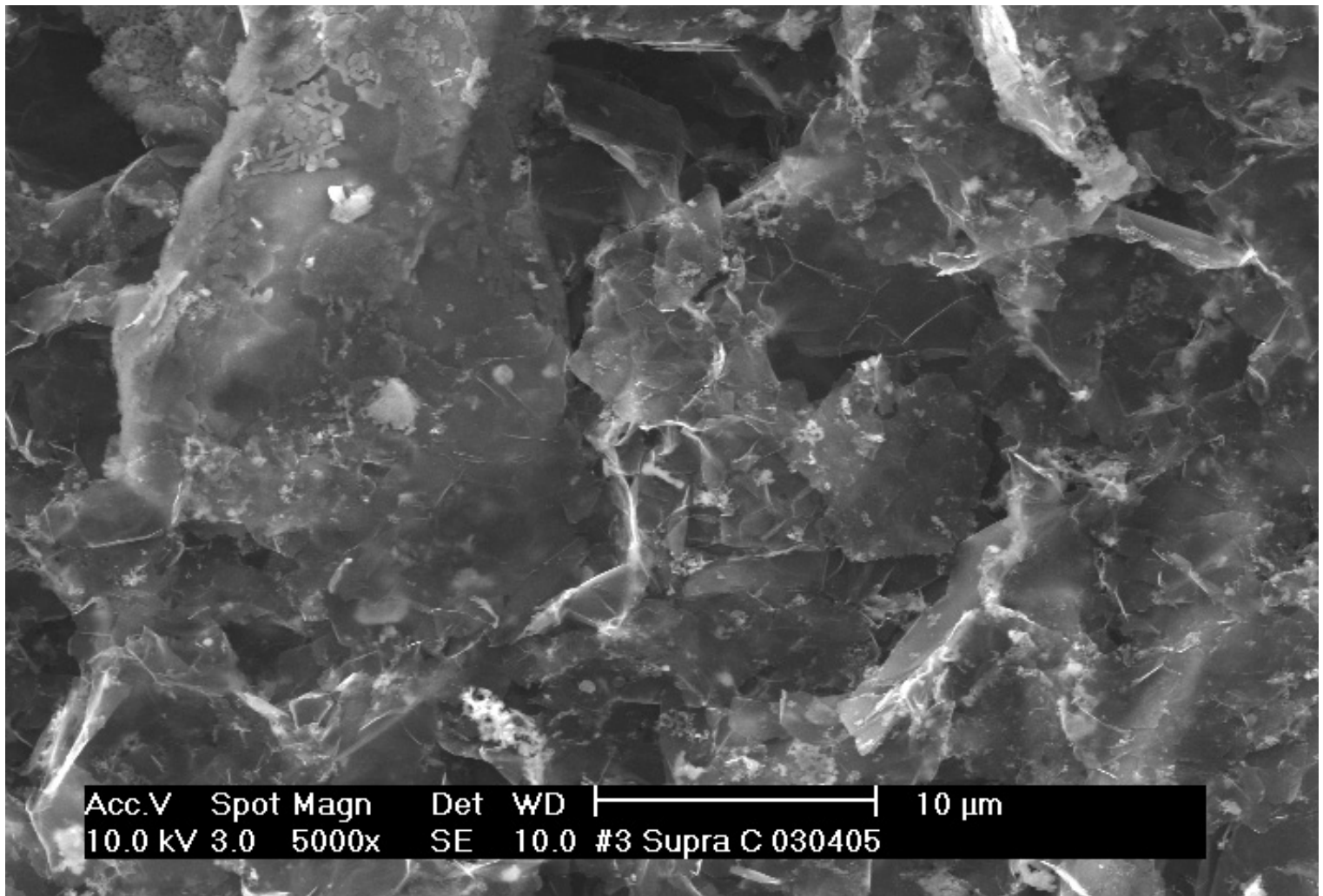
Acc.V Spot Magn Det WD |-----| 10 µm
10.0 kV 3.0 5000x SE 10.0 #3 Supra C 030405



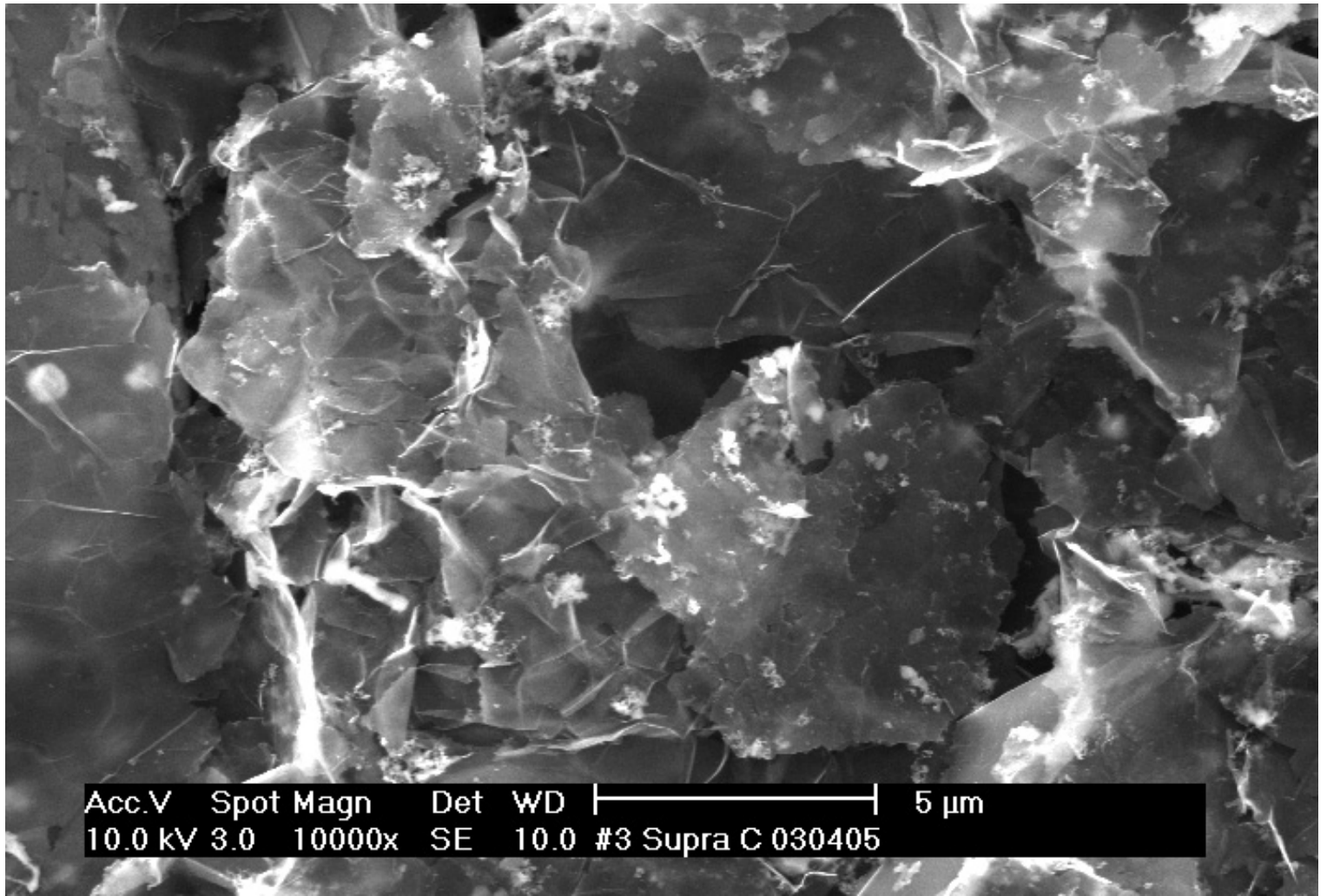
Acc.V Spot Magn Det WD |-----| 10 μm
10.0 kV 3.0 5000x BSE 10.0 #3 Supra C 030405

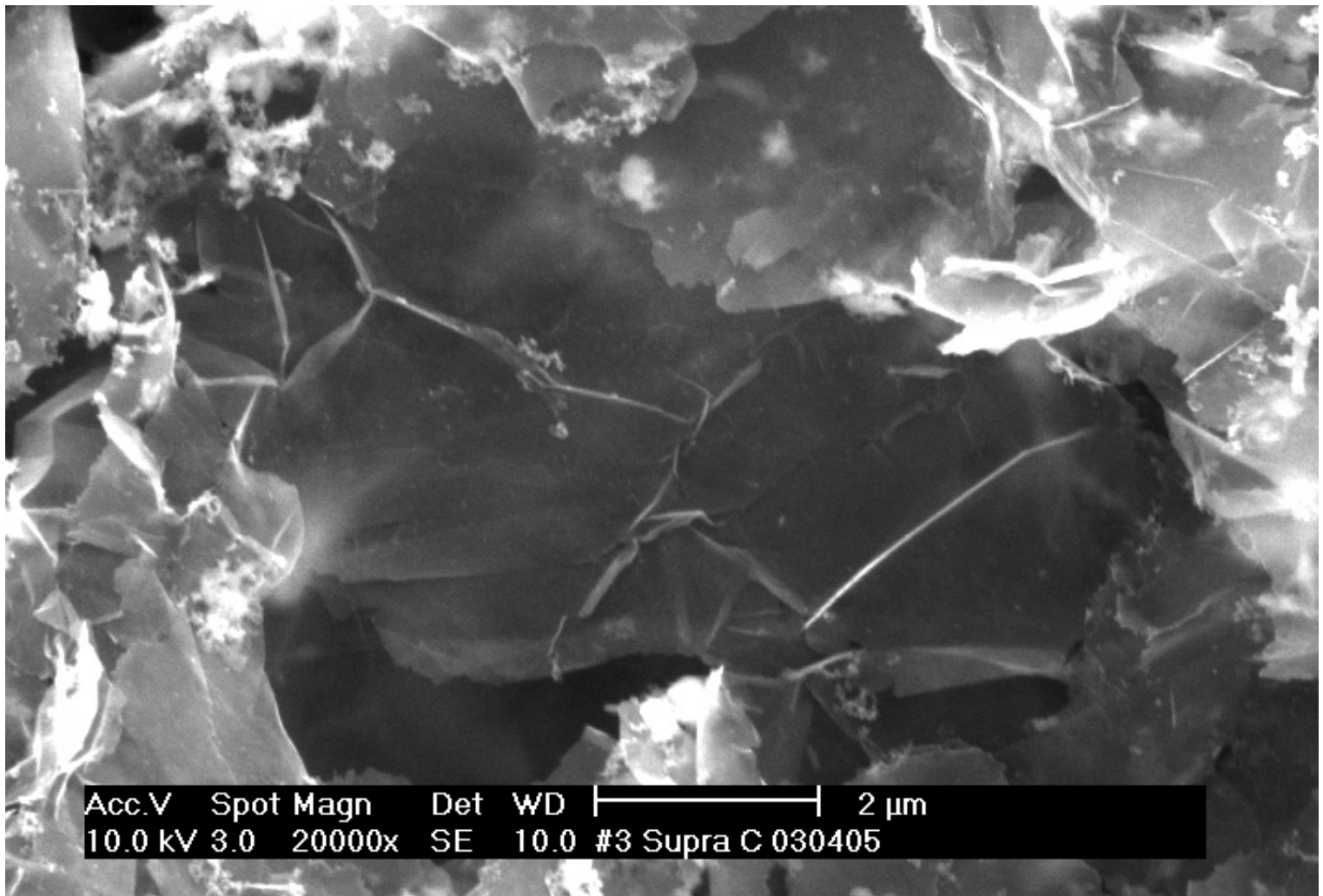


Acc.V Spot Magn Det WD |-----| 20 μ m
10.0 kV 3.0 2000x SE 10.0 #3 Supra C 030405

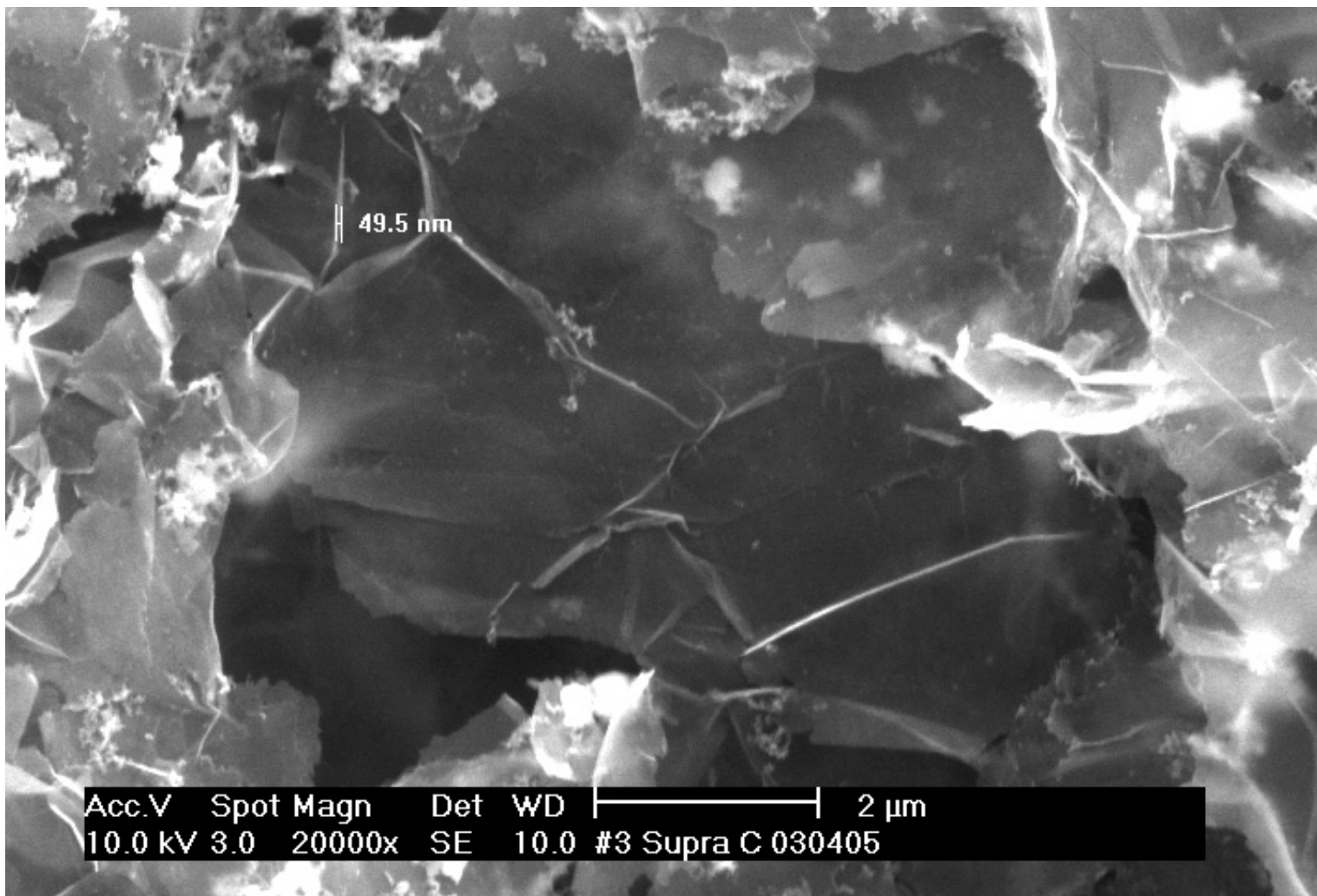


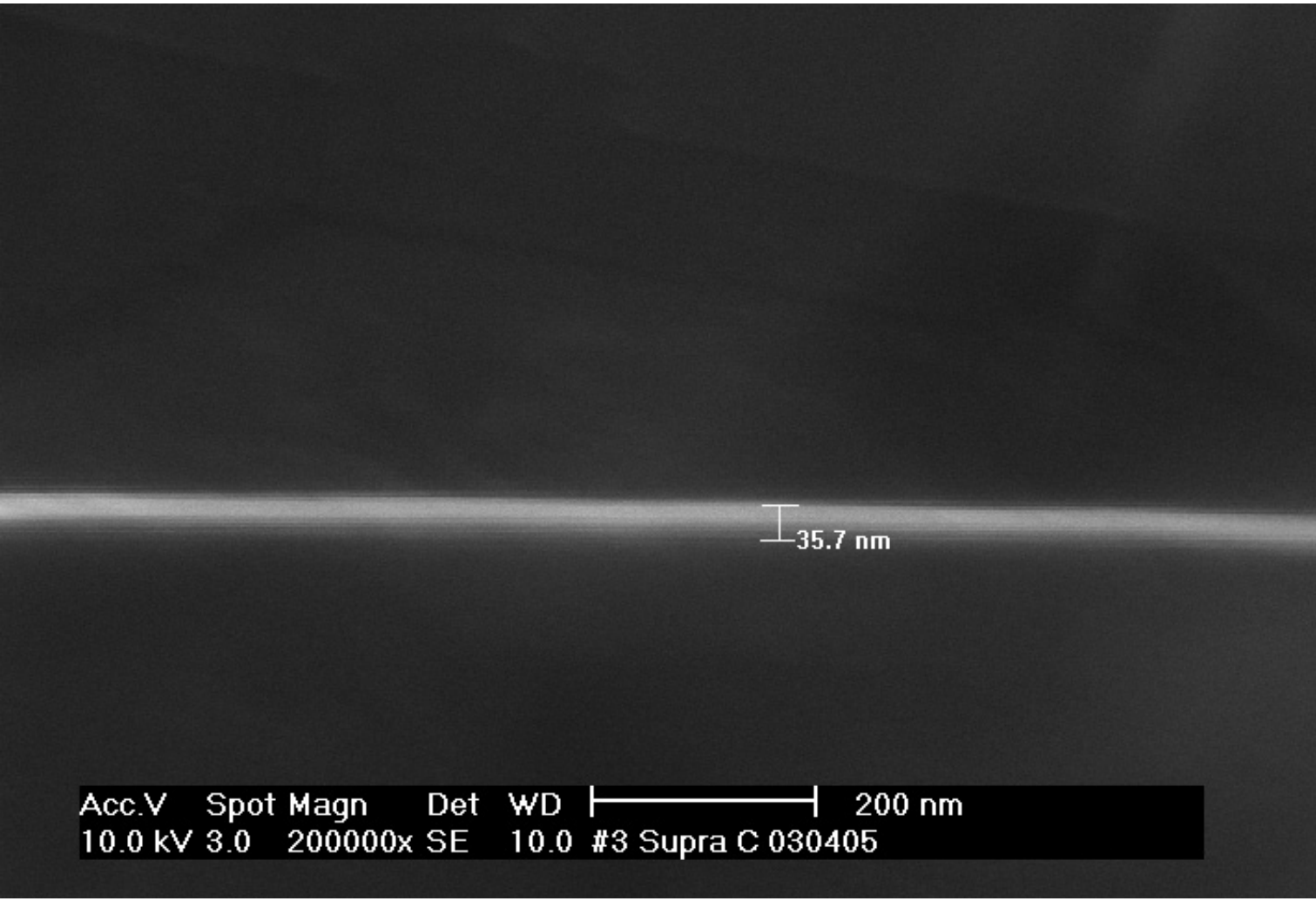
Acc.V	Spot	Magn	Det	WD	—————	10 μ m
10.0 kV	3.0	5000x	SE	10.0	#3 Supra C 030405	





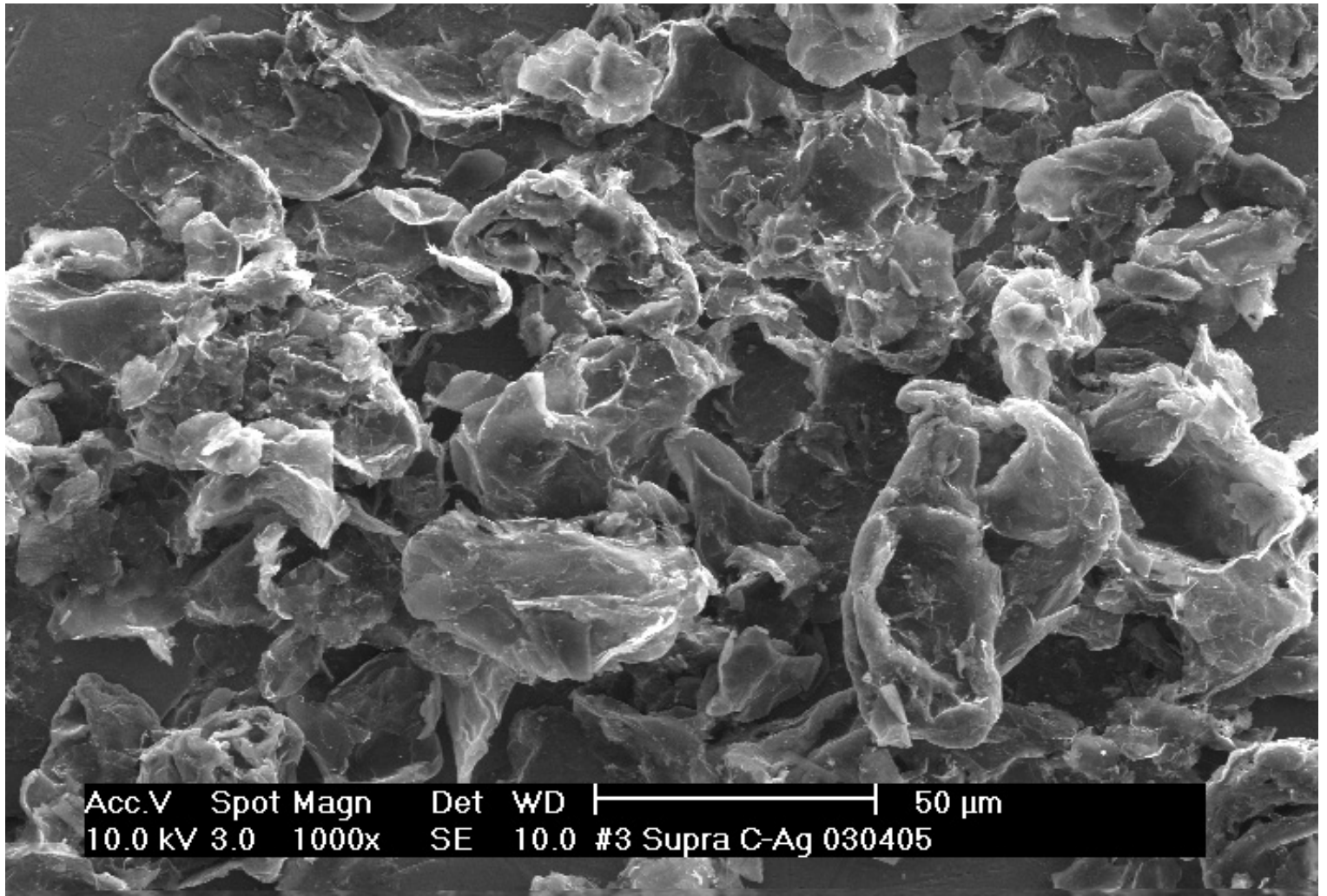
Acc.V Spot Magn Det WD |-----| 2 μm
10.0 kV 3.0 20000x SE 10.0 #3 Supra C 030405

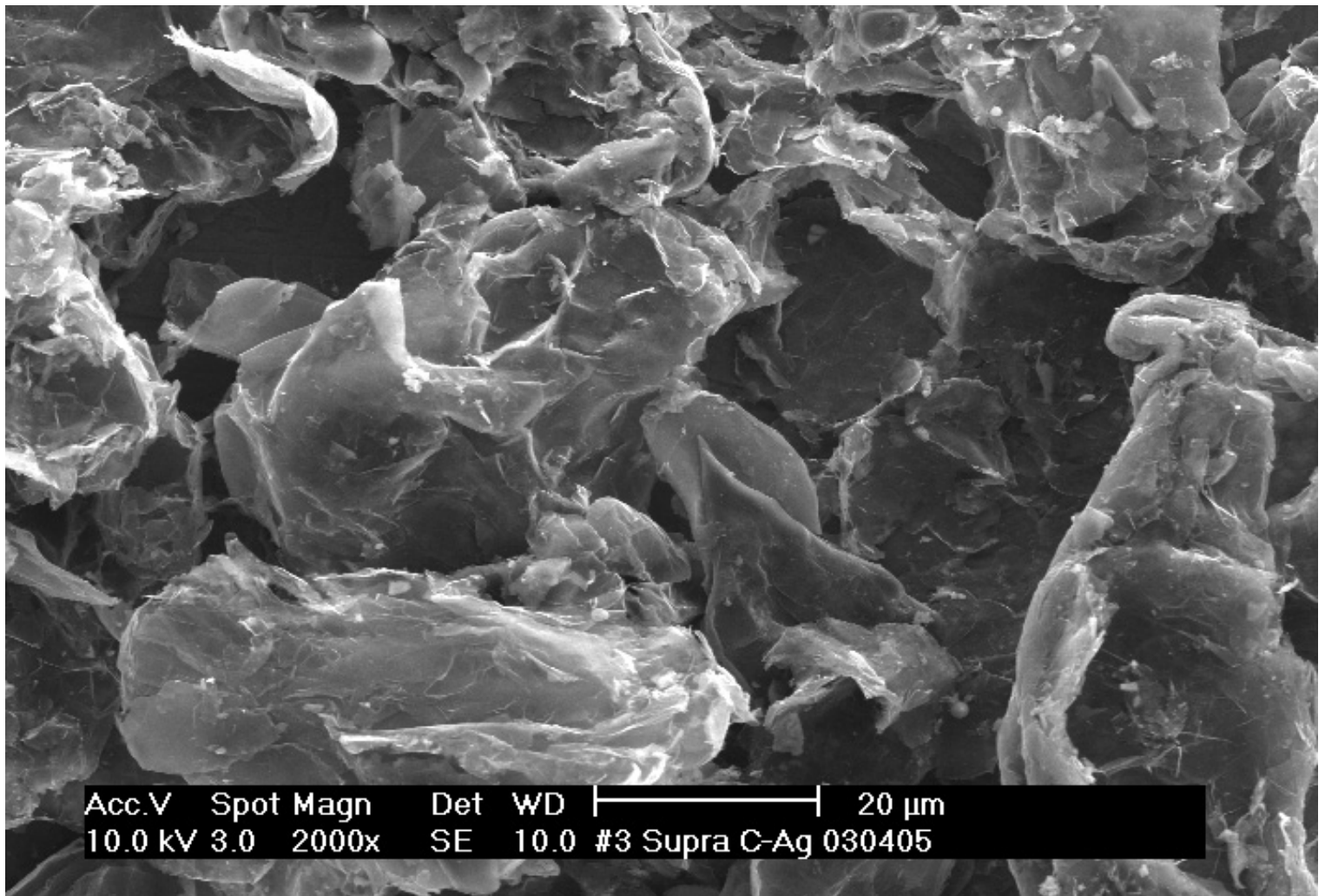


This is a scanning electron microscope (SEM) image showing a single, thin, horizontal line. A scale bar is positioned above the line, indicating a length of 35.7 nm. The background is dark and mostly featureless.

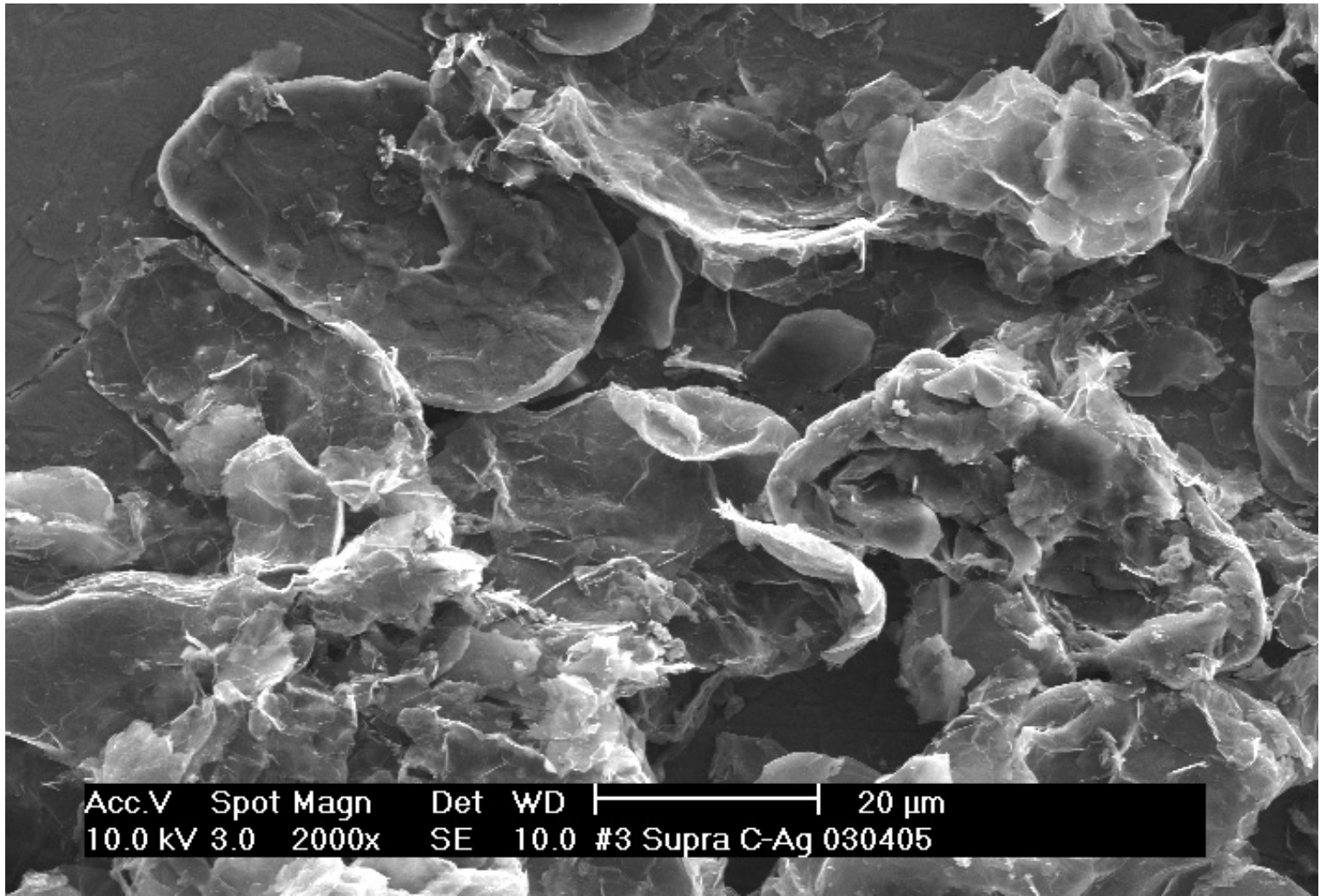
35.7 nm

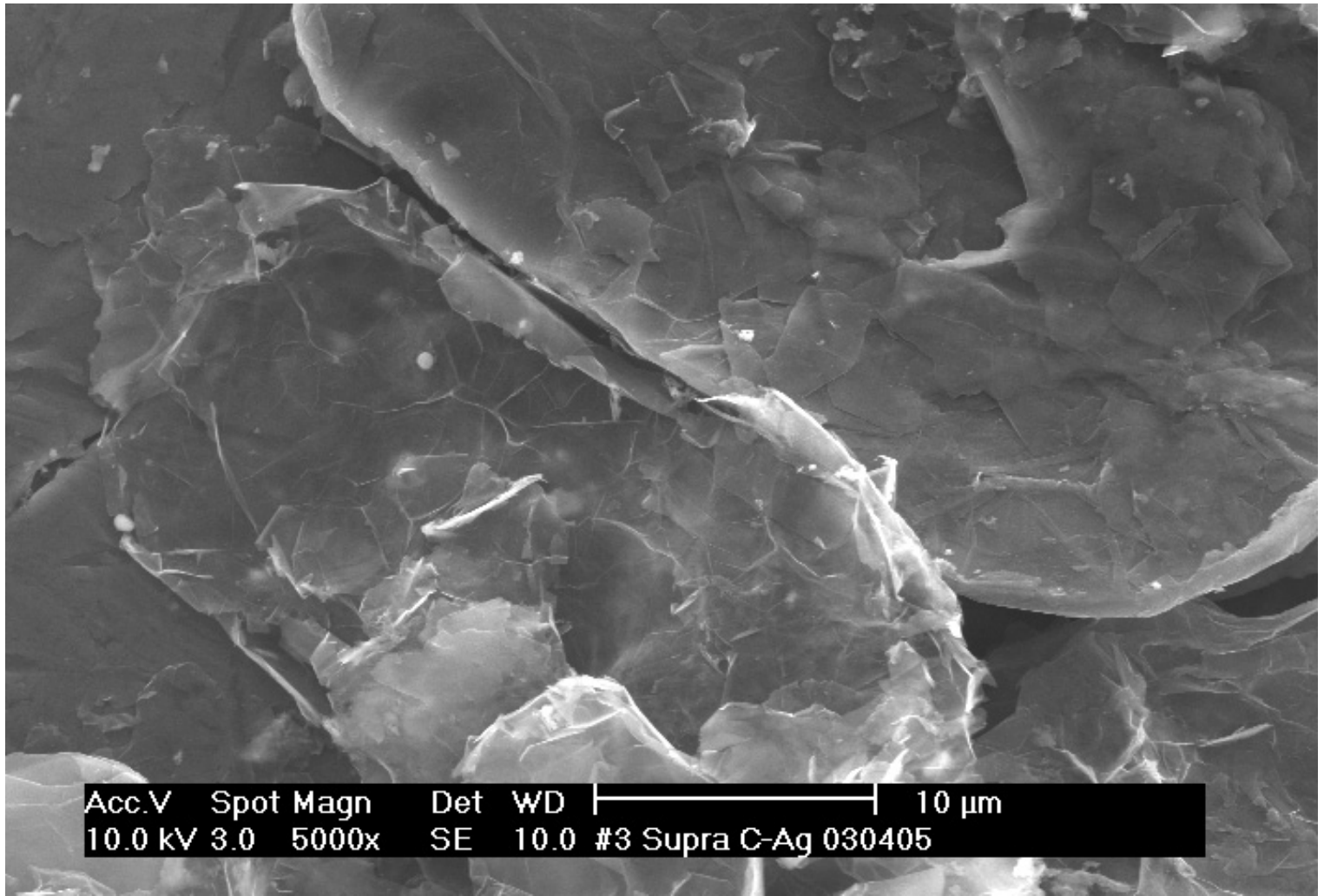
Acc.V	Spot	Magn	Det	WD	200 nm
10.0 kV	3.0	200000x	SE	10.0 #3	Supra C 030405



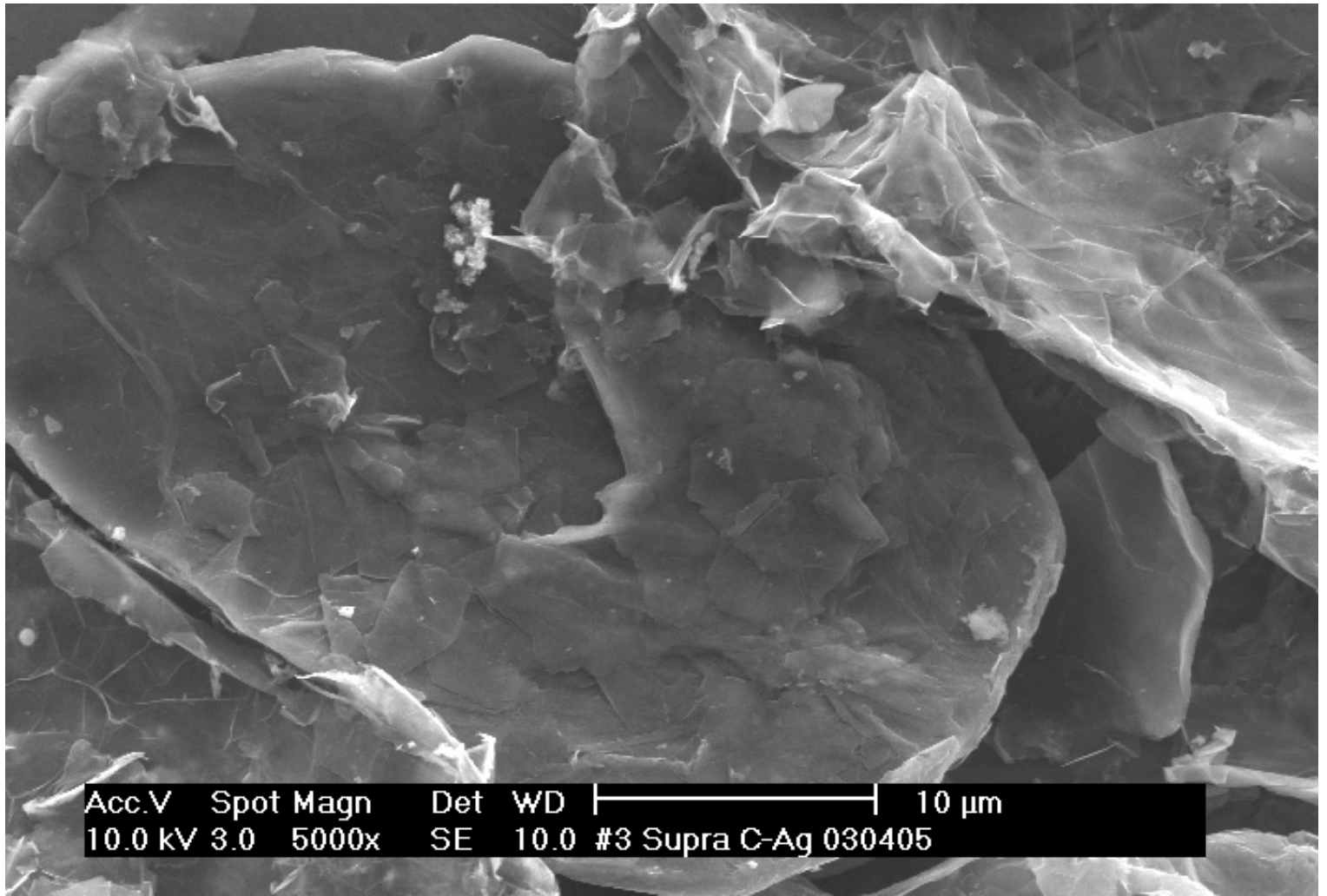


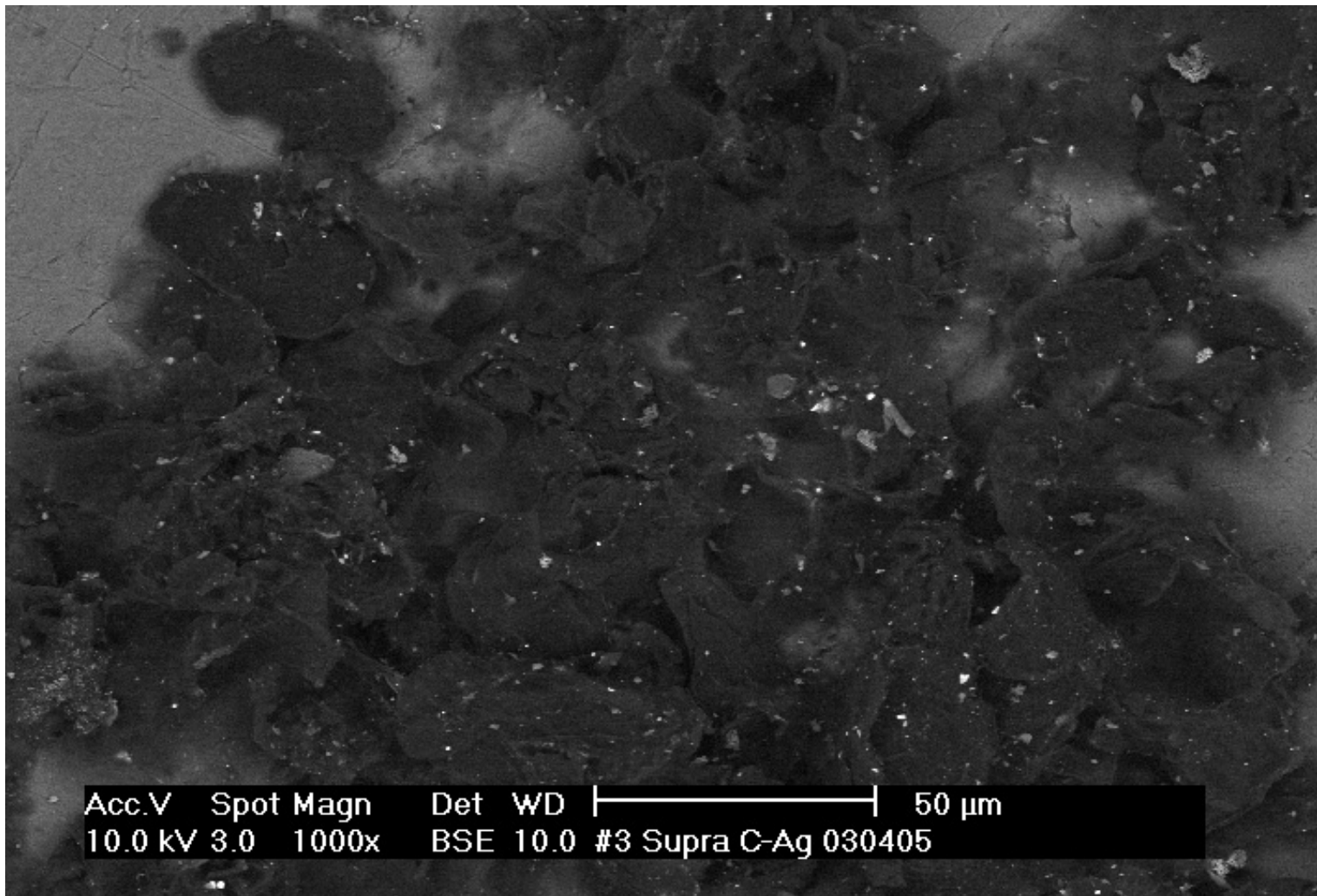
Acc.V Spot Magn Det WD |-----| 20 μ m
10.0 kV 3.0 2000x SE 10.0 #3 Supra C-Ag 030405



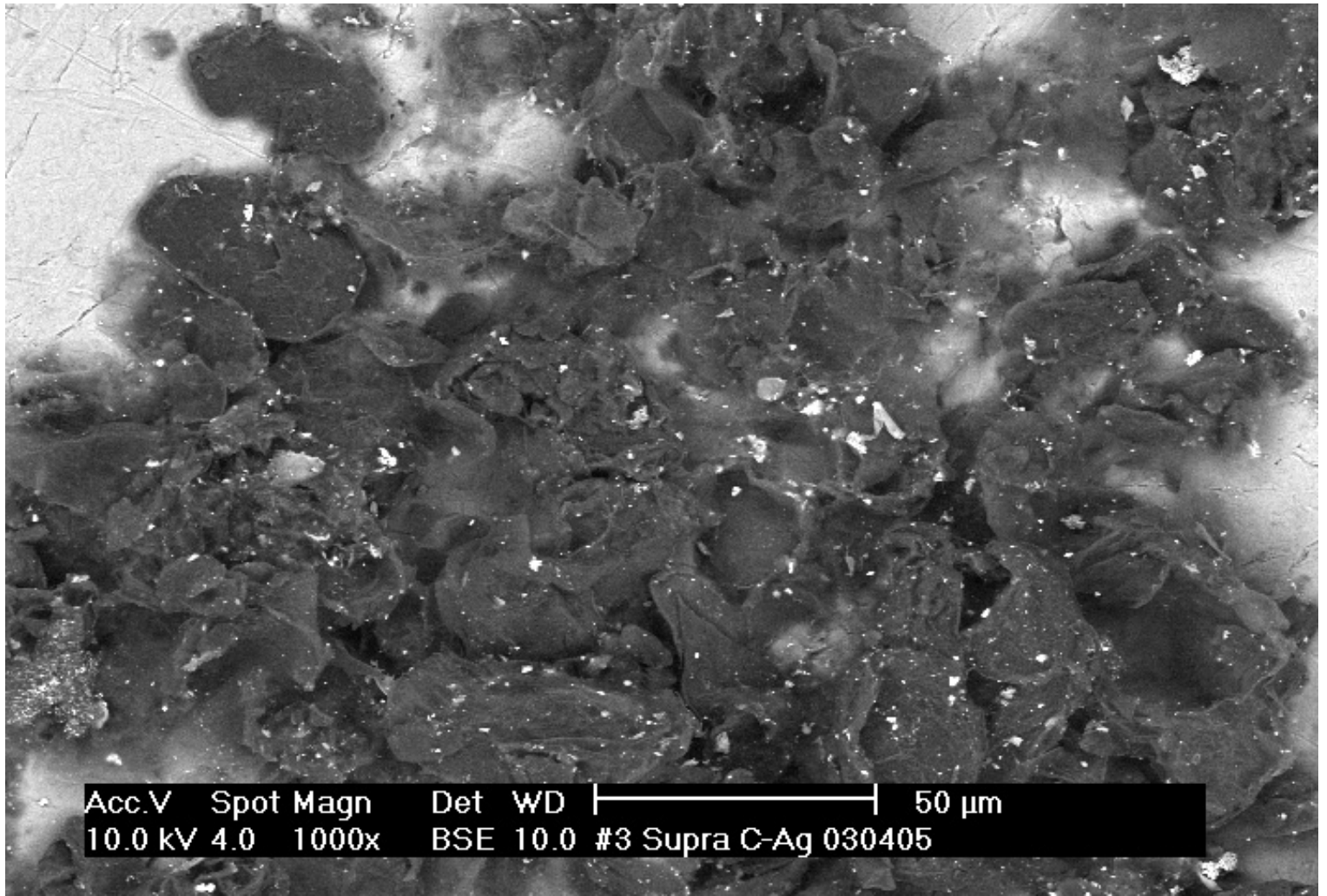


Acc.V	Spot	Magn	Det	WD	-----	10 µm
10.0 kV	3.0	5000x	SE	10.0	#3 Supra C-Ag 030405	

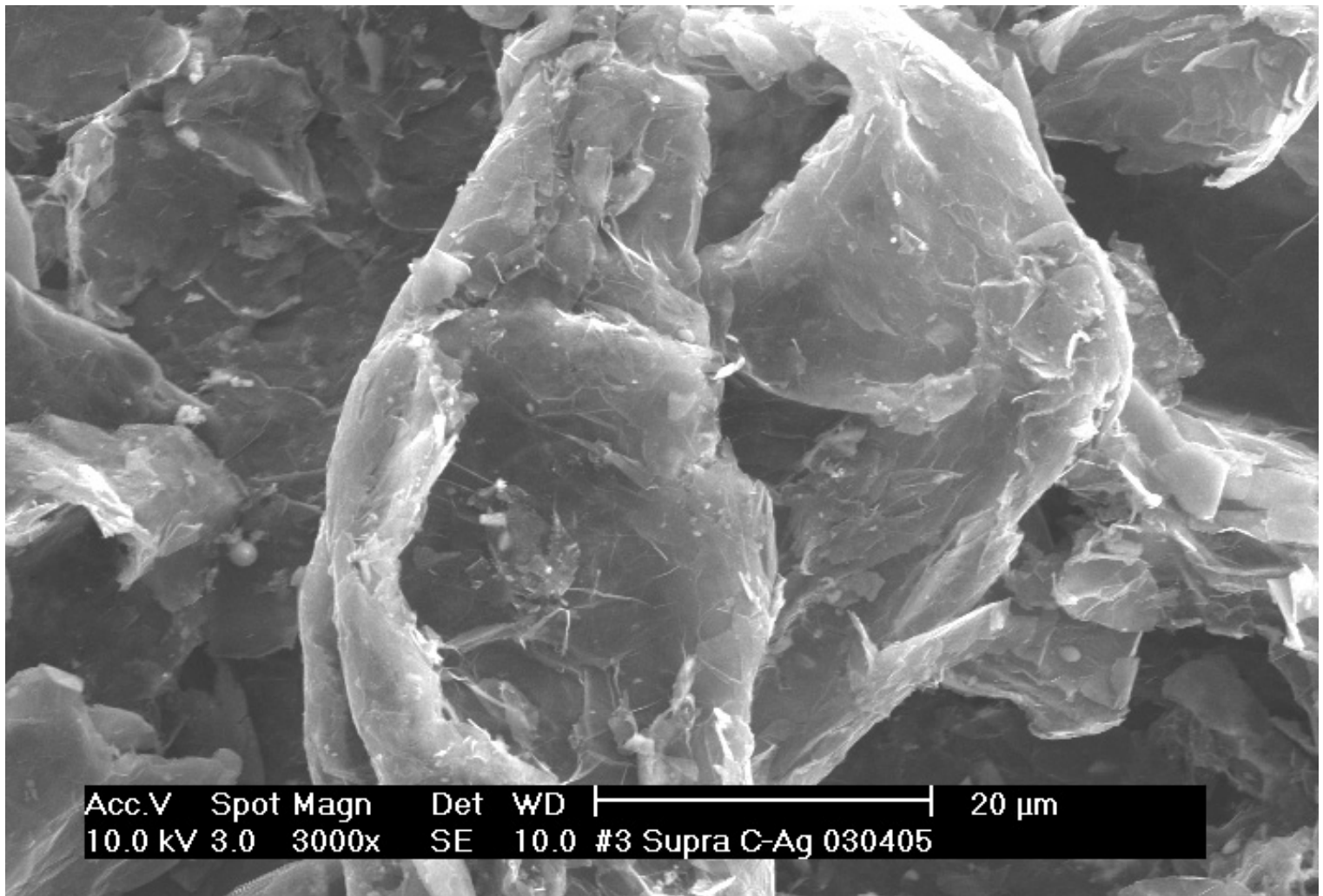


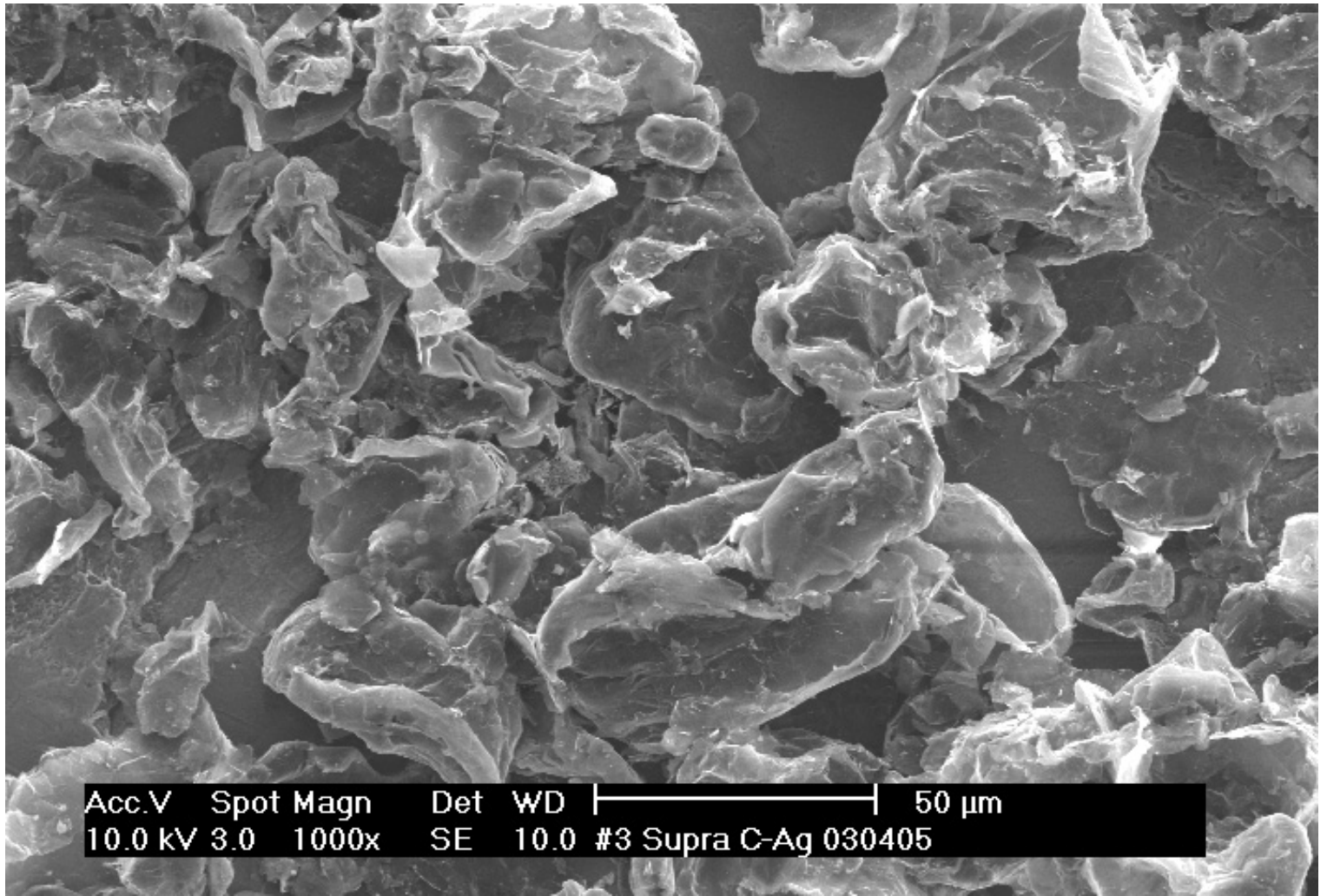


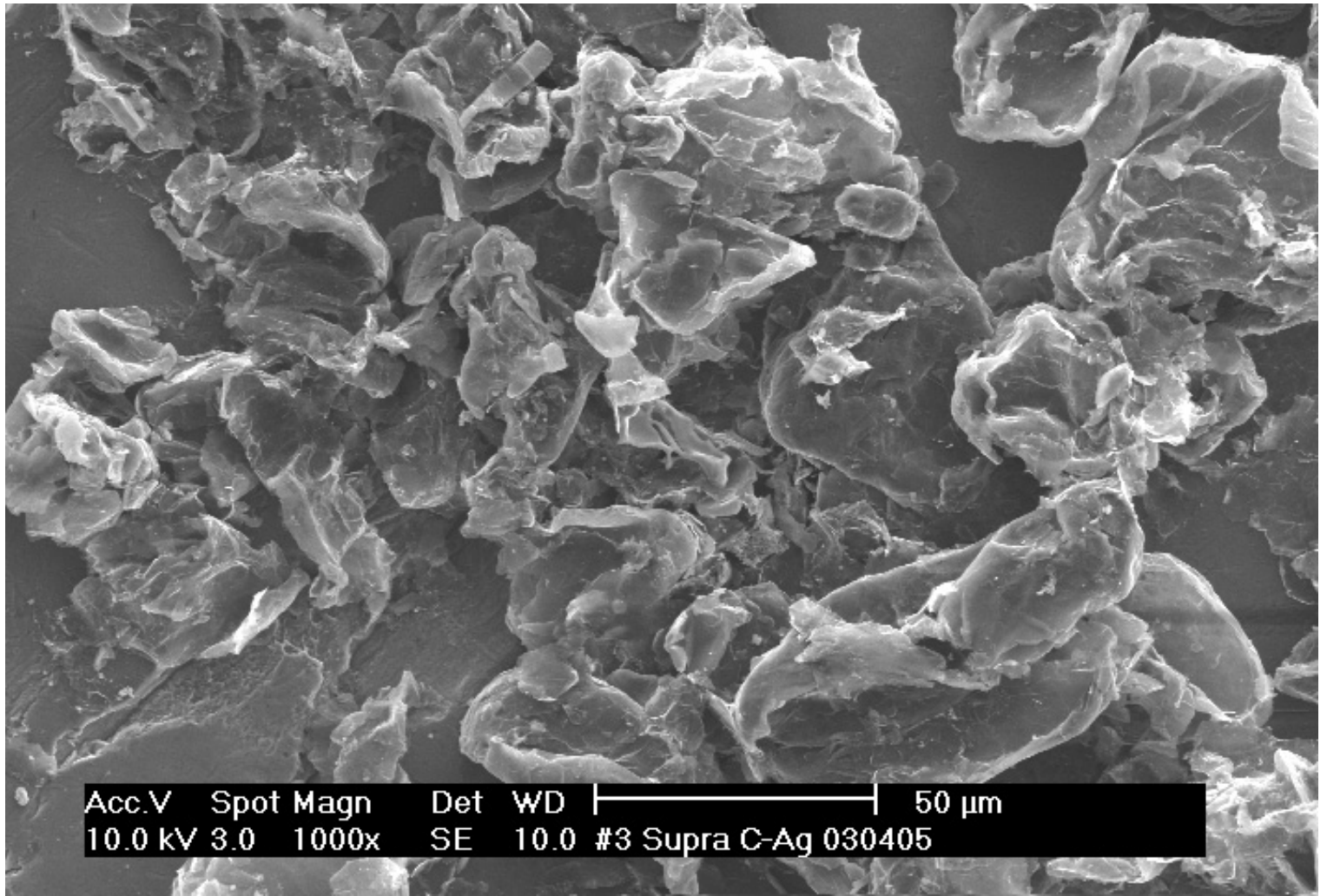
Acc.V Spot Magn Det WD |-----| 50 μm
10.0 kV 3.0 1000x BSE 10.0 #3 Supra C-Ag 030405

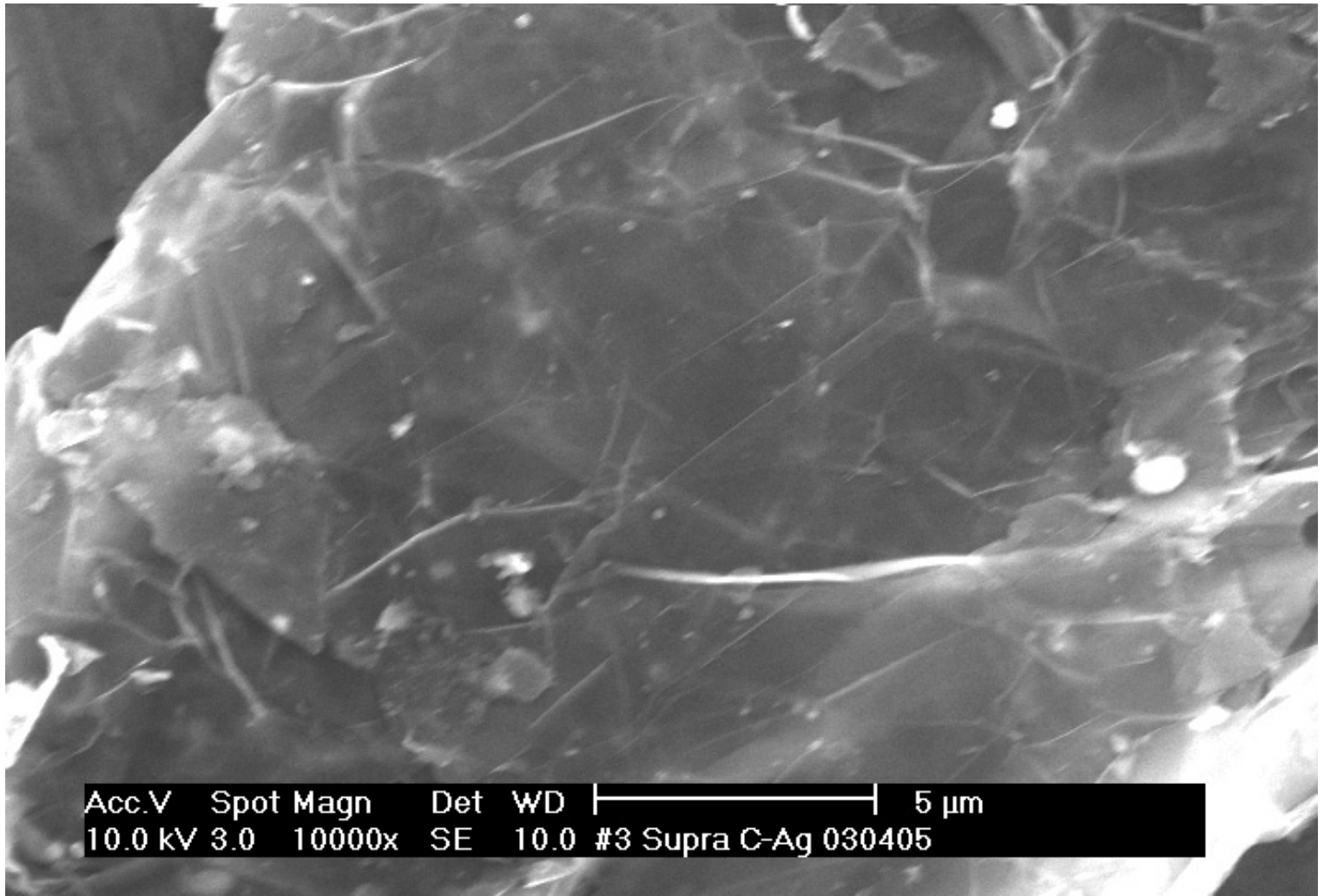


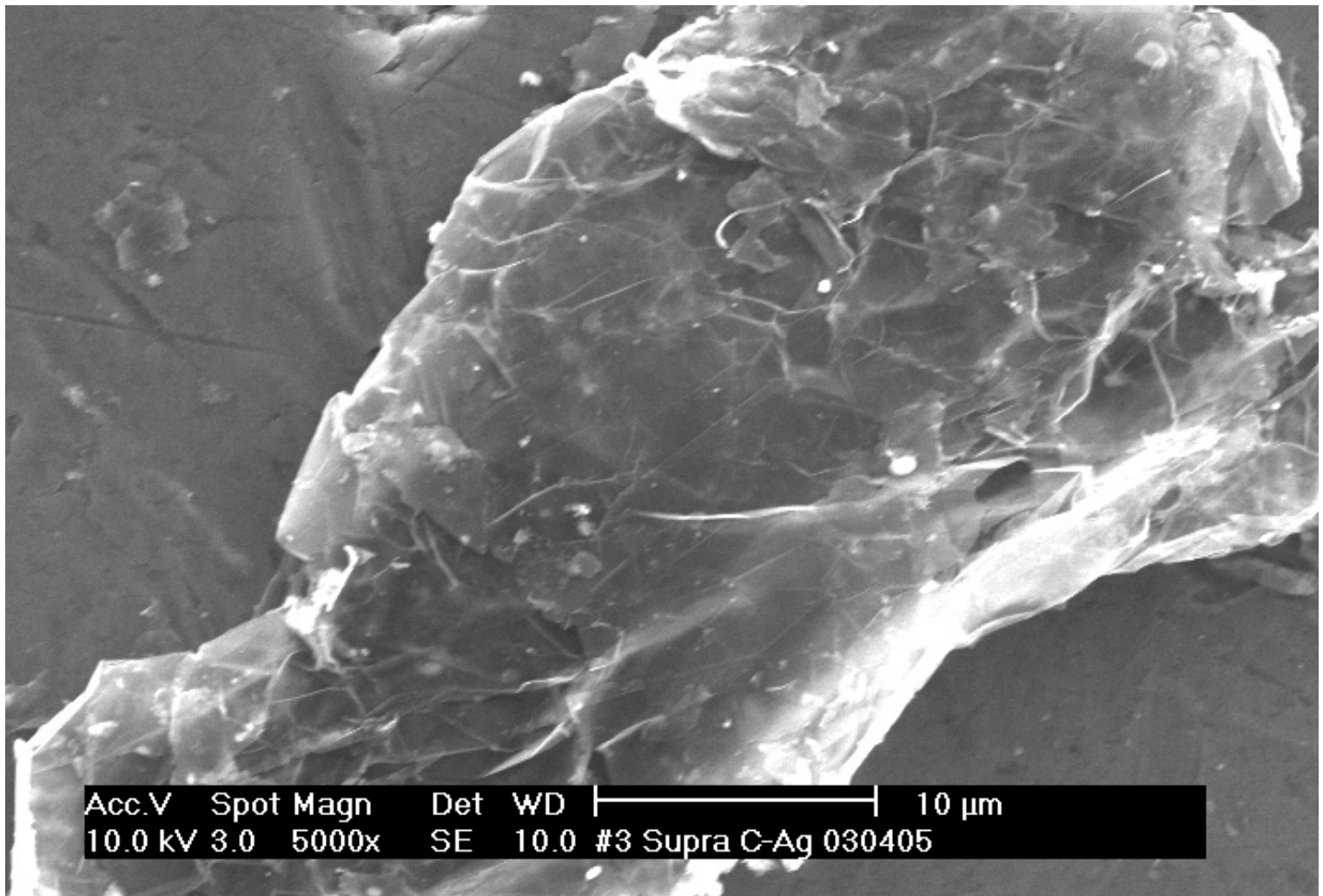
Acc.V Spot Magn Det WD |-----| 50 μm
10.0 kV 4.0 1000x BSE 10.0 #3 Supra C-Ag 030405



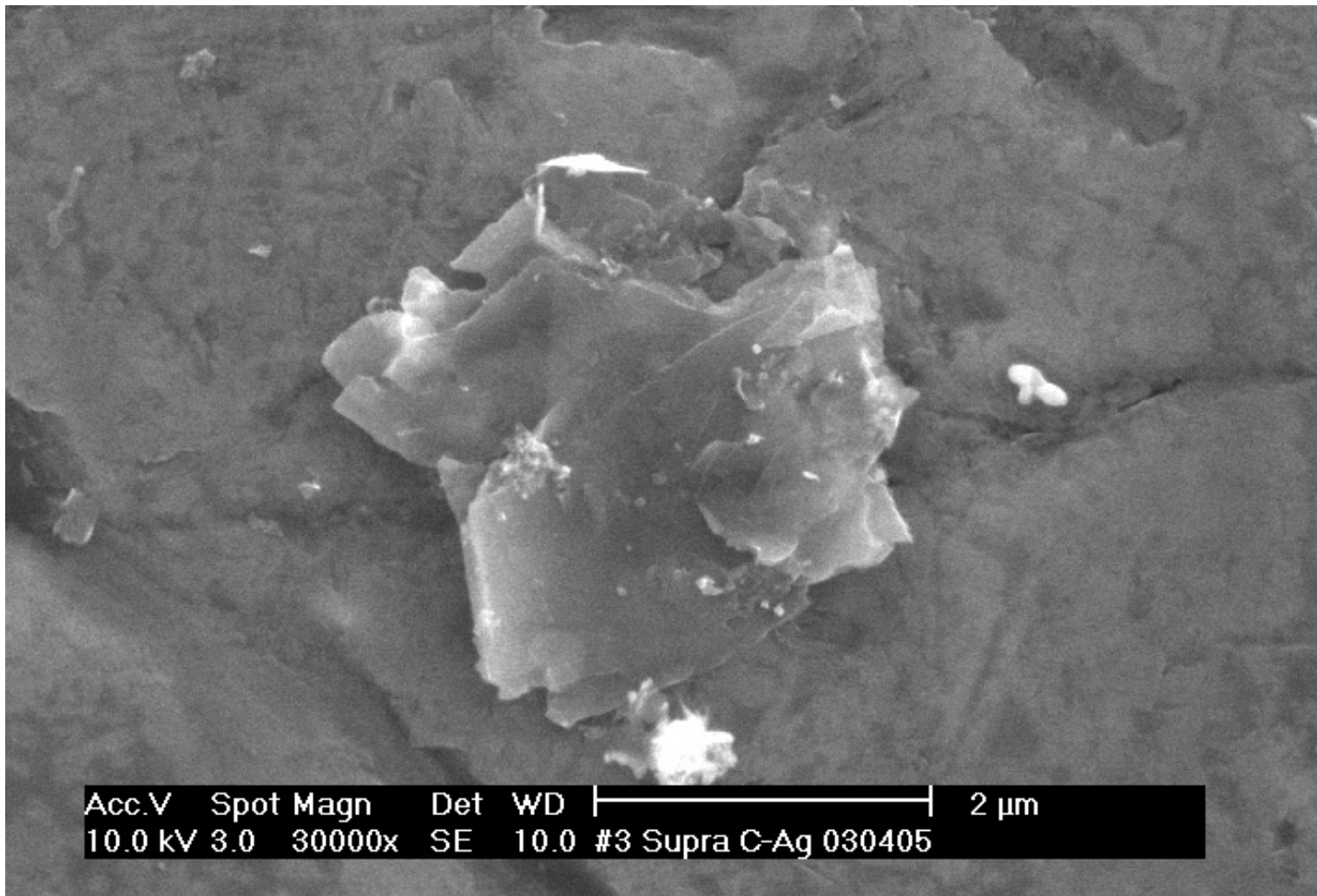




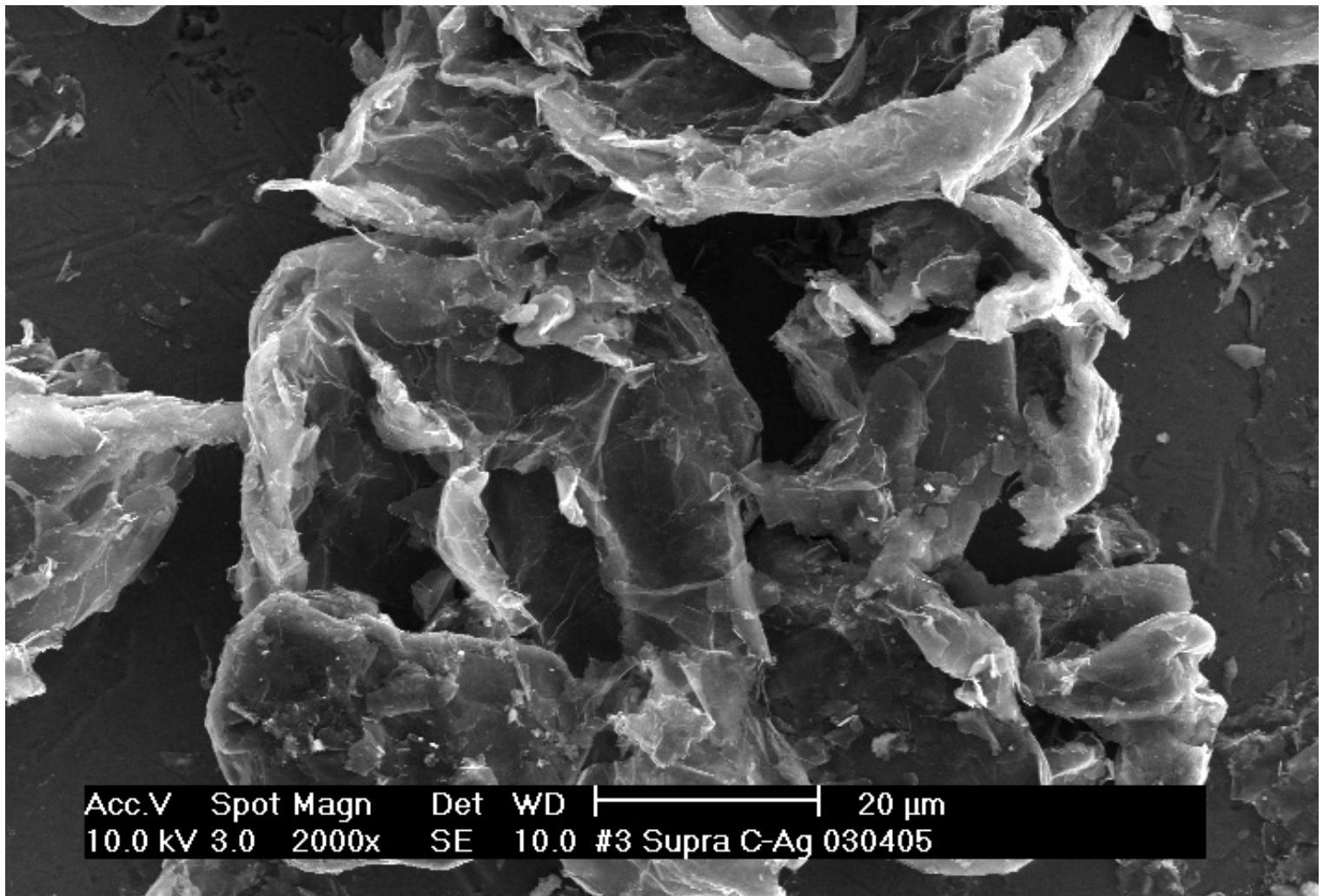




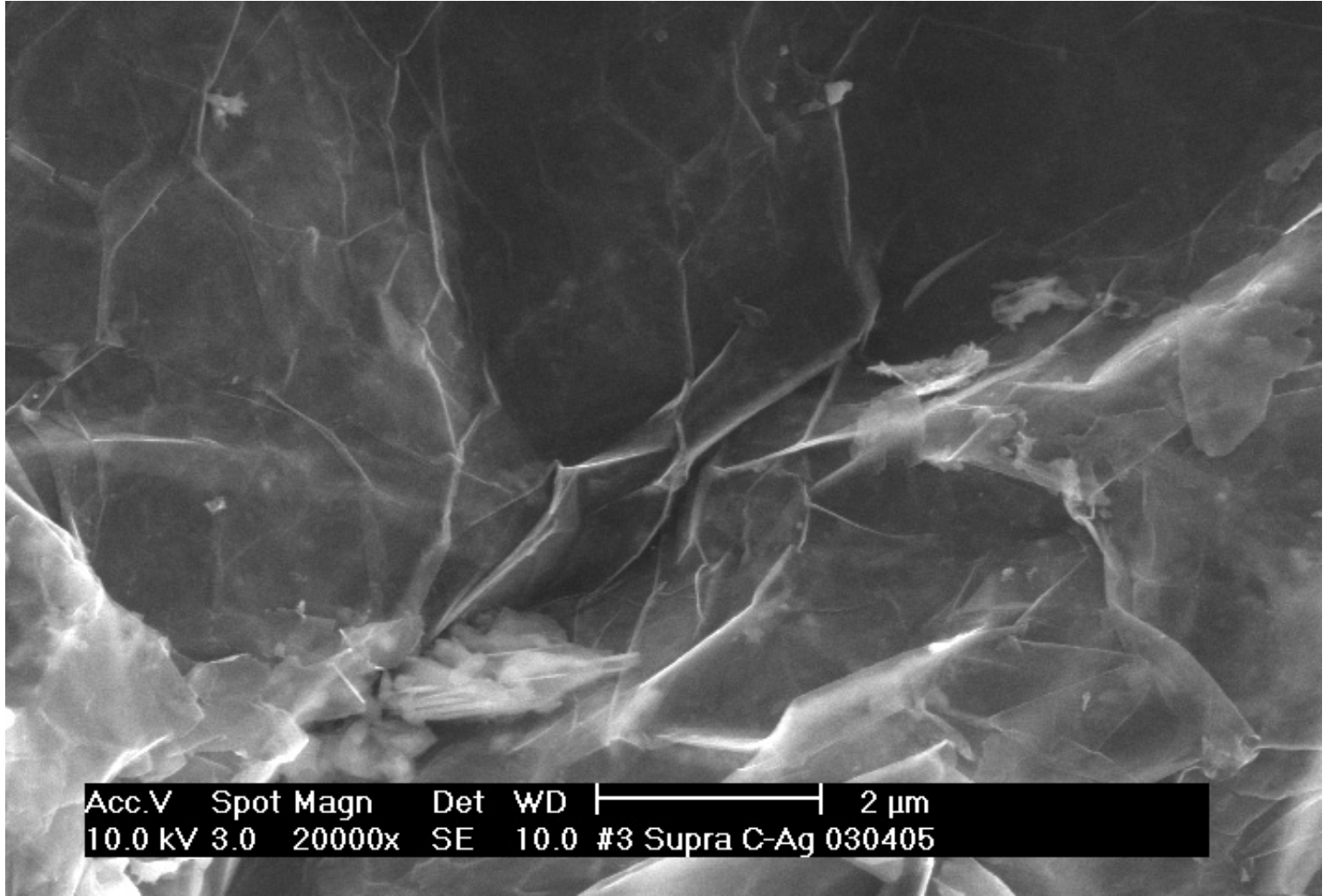
Acc.V Spot Magn Det WD |-----| 10 μ m
10.0 kV 3.0 5000x SE 10.0 #3 Supra C-Ag 030405



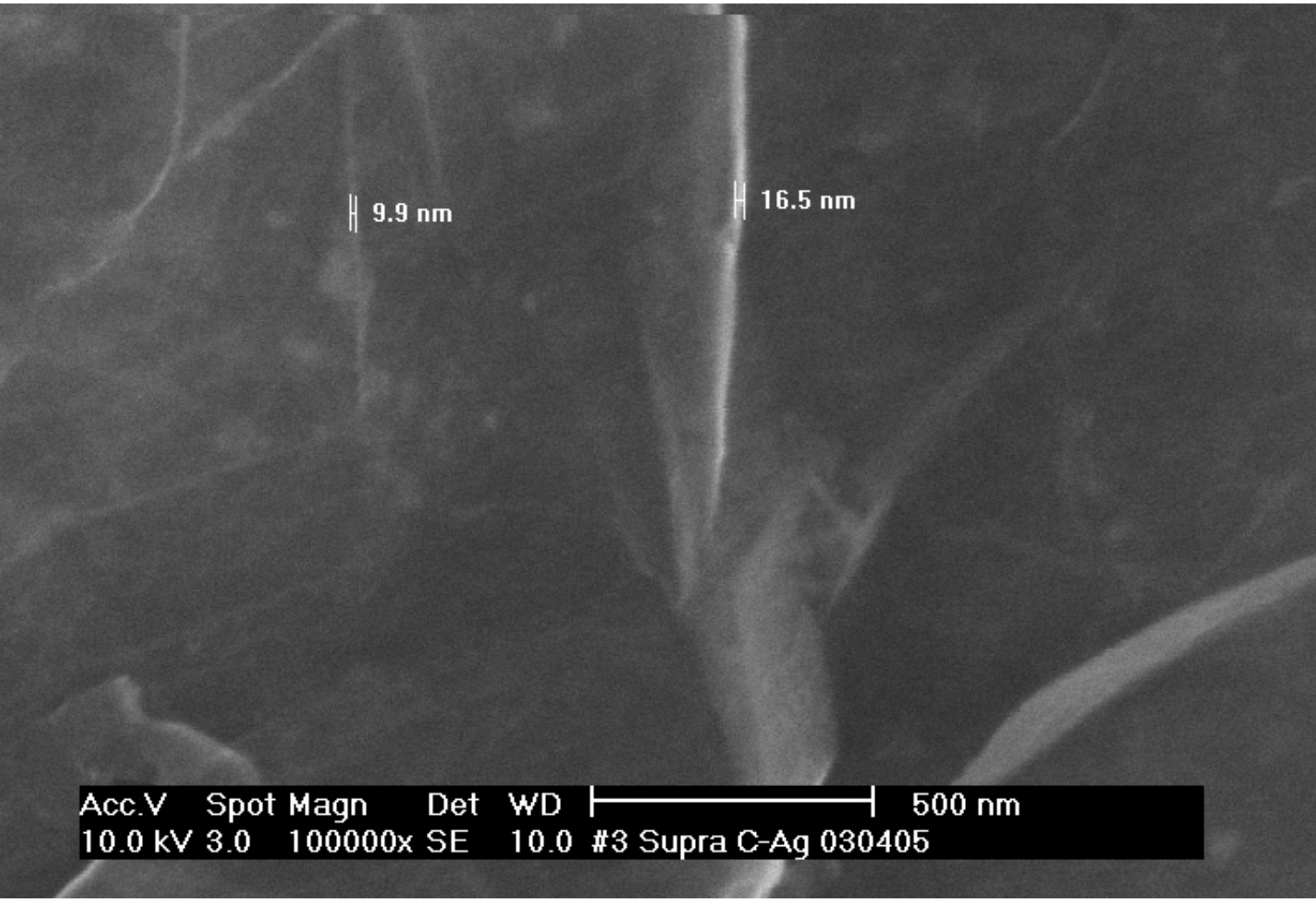
Acc.V	Spot	Magn	Det	WD		2 μm
10.0 kV	3.0	30000x	SE	10.0	#3 Supra C-Ag 030405	



Acc.V Spot Magn Det WD |-----| 20 μ m
10.0 kV 3.0 2000x SE 10.0 #3 Supra C-Ag 030405



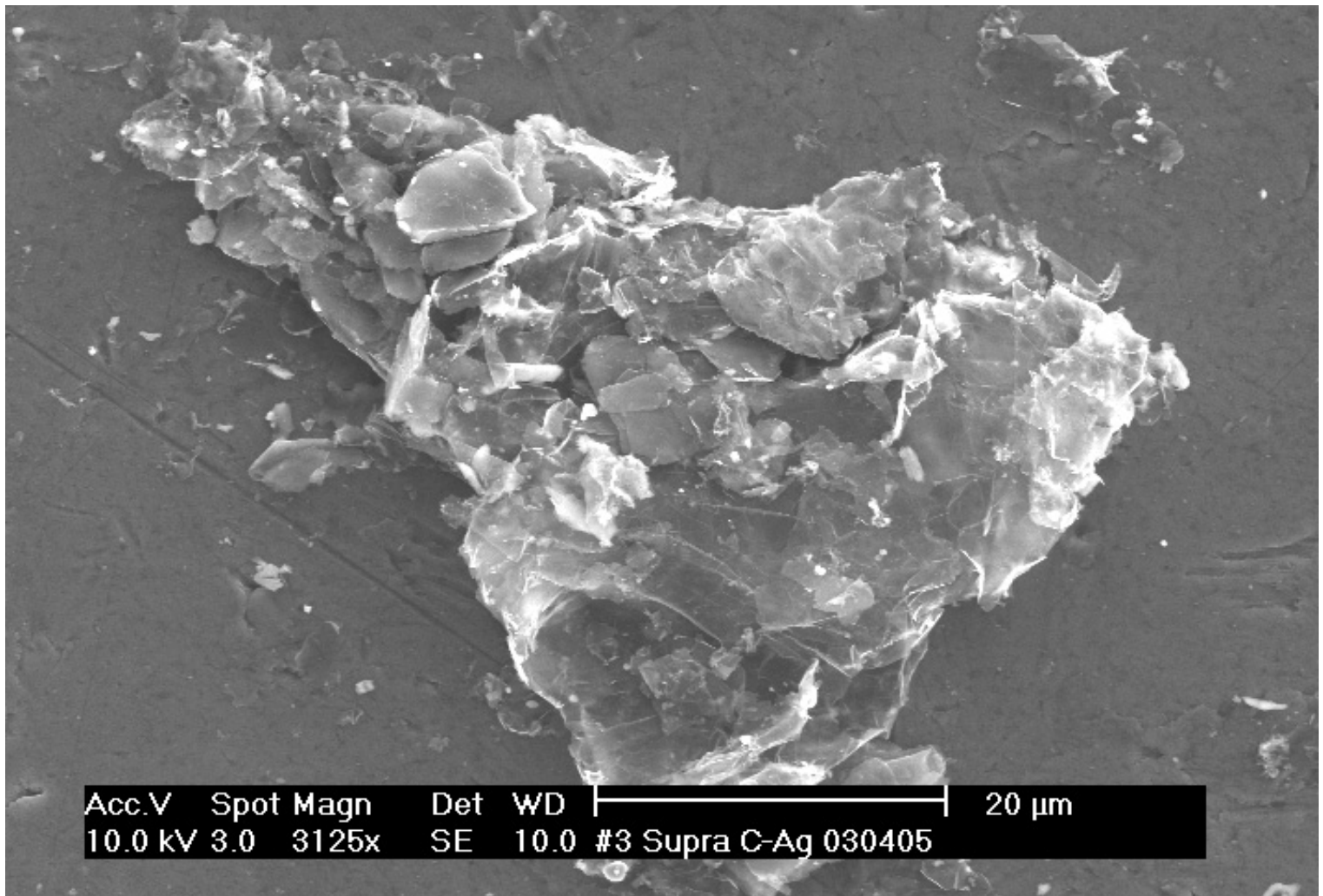
Acc.V Spot Magn Det WD |-----| 2 μm
10.0 kV 3.0 20000x SE 10.0 #3 Supra C-Ag 030405



9.9 nm

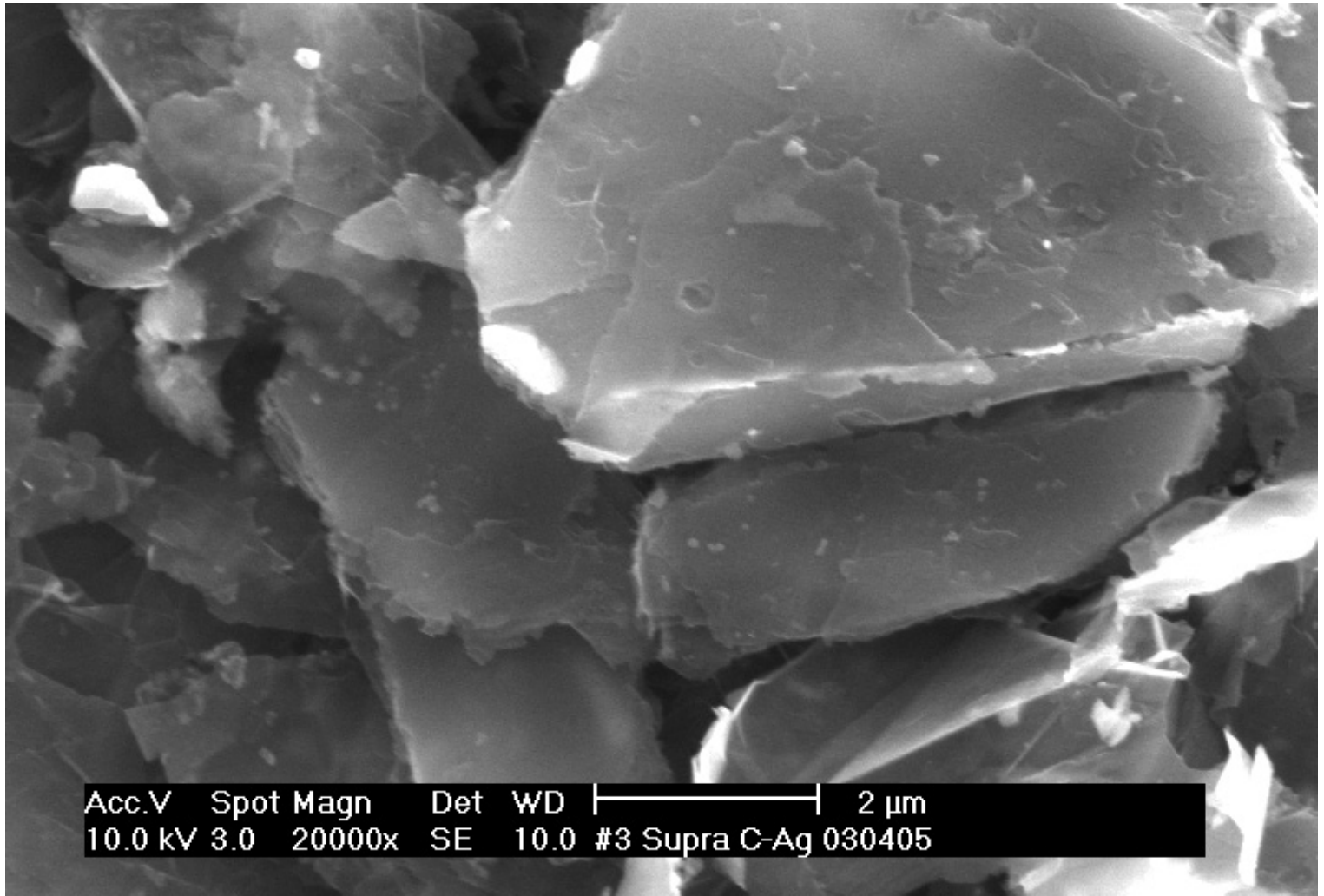
16.5 nm

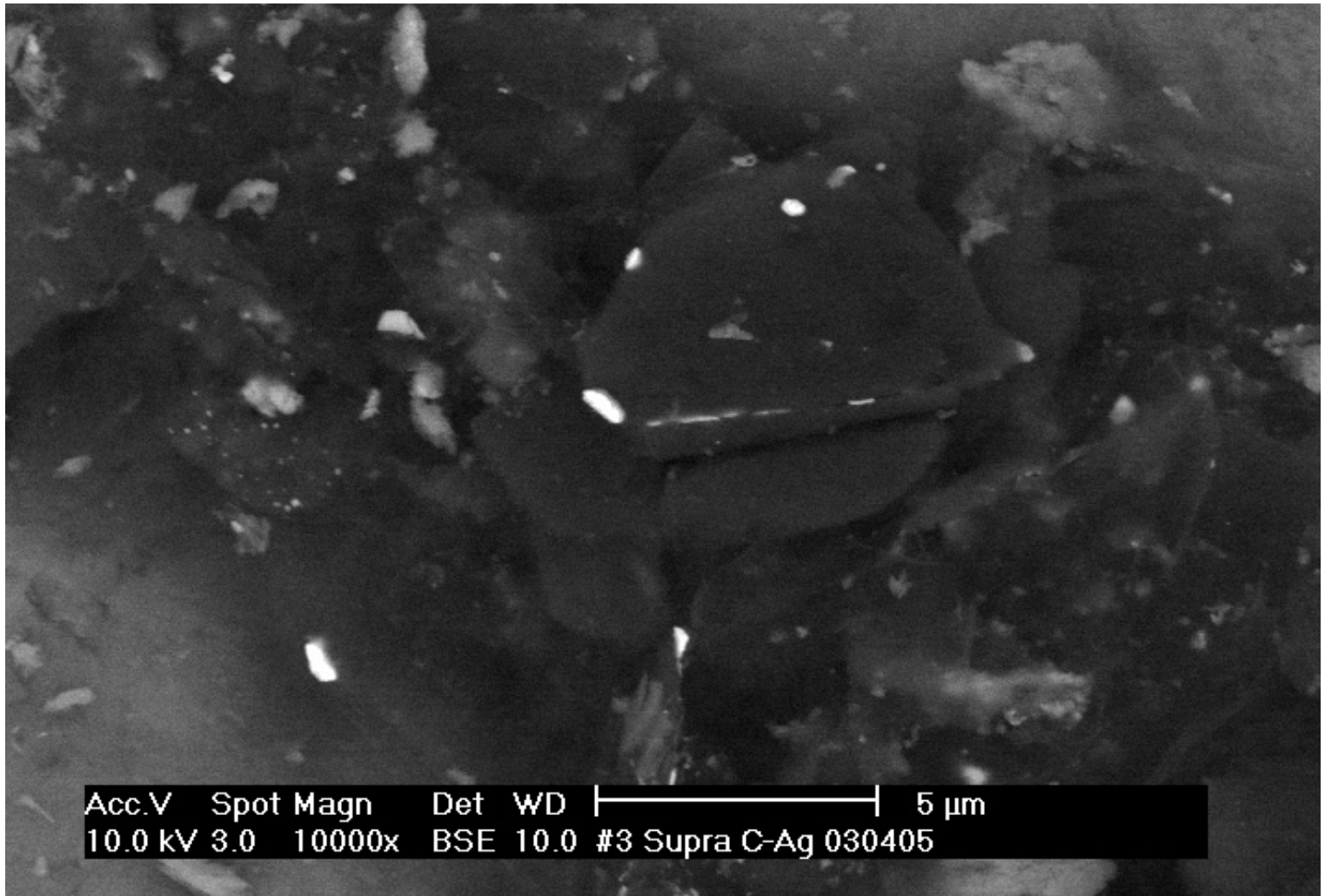
Acc.V Spot Magn Det WD |-----| 500 nm
10.0 kV 3.0 100000x SE 10.0 #3 Supra C-Ag 030405



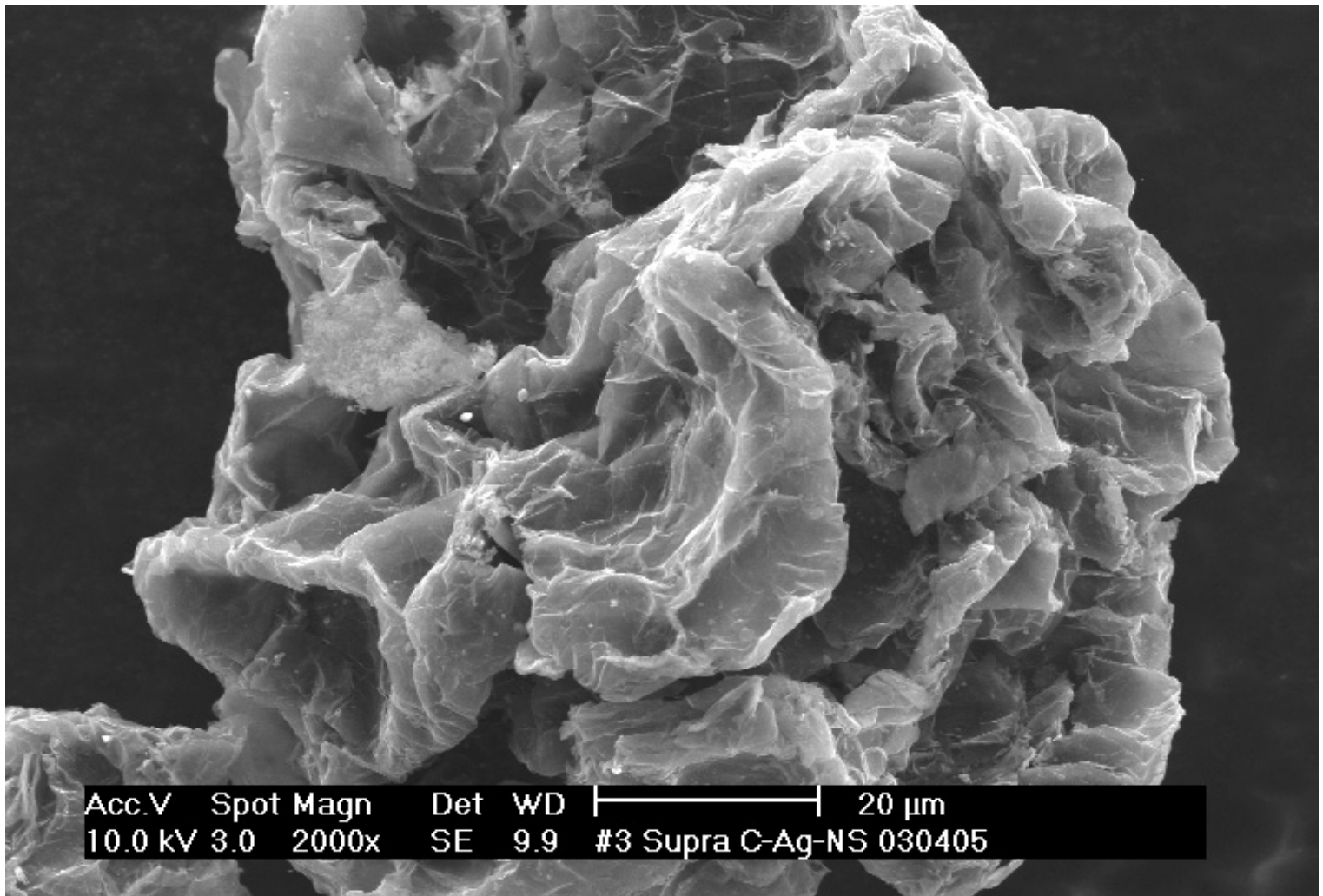
Acc.V	Spot	Magn	Det	WD		20 μ m
10.0 kV	3.0	3125x	SE	10.0	#3 Supra C-Ag 030405	



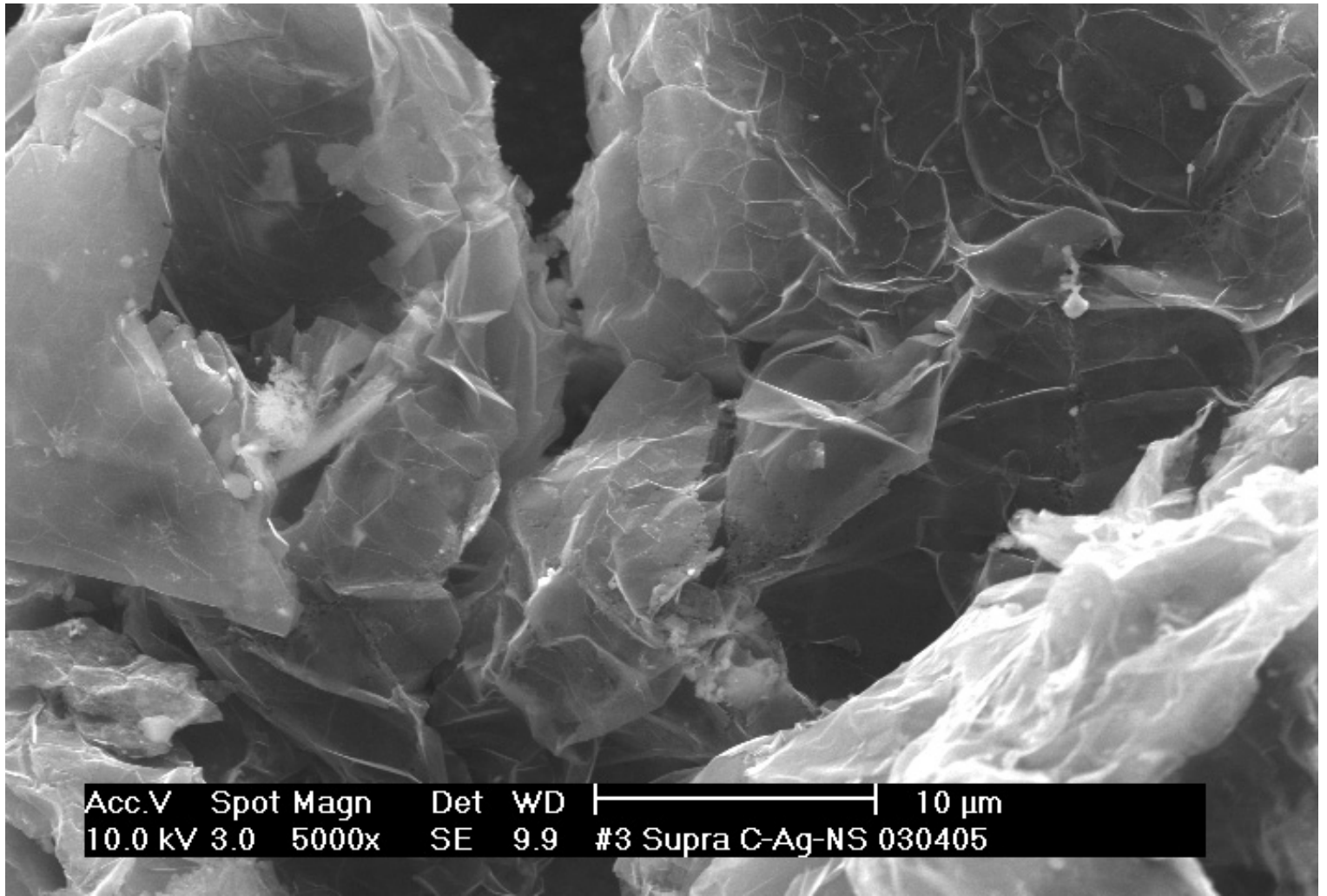




Acc.V Spot Magn Det WD |-----| 5 μm
10.0 kV 3.0 10000x BSE 10.0 #3 Supra C-Ag 030405



Acc.V 10.0 kV Spot 3.0 Magn 2000x Det SE WD 9.9 | 20 μm
#3 Supra C-Ag-NS 030405



Acc.V	Spot	Magn	Det	WD	10 µm
10.0 kV	3.0	5000x	SE	9.9	#3 Supra C-Ag-NS 030405



Acc.V Spot Magn Det WD | 50 μ m
10.0 kV 3.0 1000x SE 9.7 #3 Supra C-Ag-NS 030405

